

PREMIUM LIST



ANGELES CANYON DOG CLUB

Thursday April 18, 2013

Friday April 19, 2013



The BURBANK KENNEL CLUB

Saturday April 20, 2013

Sunday, April 21, 2013

Springtime at City of Industry

Industry Hills Expo Center

City of Industry, California

Entries close Noon Wednesday, April 3, 2013 PDT

IMPORTANT NOTICE

Mail Entries with Fees to Jack Bradshaw, Superintendent

P.O. Box 227303, Los Angeles, CA 90022

Make checks payable to Jack Bradshaw

FAX SERVICE: (323) 727-2949 E-MAIL ENTRIES: www.jbradshaw.com

\$4.00 per dog per show. \$2.00 per cancellation

Include Mastercard, Visa or American Express number & expiration date

Hand Deliveries - 5434 E. Olympic Blvd., Los Angeles, CA 90022

There will be a \$4.00 convenience fee charged per dog per show when using a credit card for payment of hand delivered or mailed in entries.

Fax machines are available 24 hours a day.

All entries with fees must be in the office of the Superintendent not later than

NOON WEDNESDAY APRIL 3, 2013 PDT

After which time no entries may be accepted, cancelled, changed, substituted, corrected, completed, or signed, and no entry fees refunded. Any change or cancellation must be made in writing and received prior to closing, except as provided for in Chapter 11, Section 6 of the American Kennel Club Dog Show Rules. Fax entries that are received incomplete or unable to read will not be accepted. The proof of transmission is not proof for verifying faxed entries. **PLEASE DO NOT WAIT UNTIL THE LAST MINUTE TO E-MAIL OR FAX YOUR ENTRIES. IF YOU FAX OR E-MAIL ON A CLOSE OF ENTRY DAY, PLEASE SUBMIT PRIOR TO 9:00 AM.**

ENTRY FEES

First Entry*\$30.00
Each additional entry..... 15.00
Junior Showmanship..... 15.00

(*Entry fees include \$.50 AKC recording fee and \$3.00 event services fee)

ATTENTION EXHIBITORS

1. *Grounds will not be available for setups until after 3 p.m. Wednesday.*
 2. There will be no setups allowed in day of show parking area.
 3. No unentered dogs will be allowed on the show grounds.
 4. Unloading zones will be indicated; cars may not be left unattended. Cars are not to remain in unloading zone over 10 minutes. Please unload and move car from the loading zone to the general parking area, as directed, and return to your dog(s) and equipment. Helpers will be available to assist.
 5. No exercise pens or setups will be allowed within 20 feet of any ring, or in the center aisles. Please make the best possible use of grooming space and be considerate of other exhibitors.
 6. Limited electricity for exhibitors' use. Generators may be used outside arena.
 7. Setups allowed only in marked areas in arena or under bleachers.
 8. Events or circumstances not covered in these operating policies and procedures may be subject to special consideration and stipulations as deemed appropriate by the equestrian center.
-

HOTELS AND MOTELS THAT WILL TAKE WELL-BEHAVED DOGS. OWNERS MUST ASSUME RESPONSIBILITY. DOGS MUST NOT BE LEFT UNATTENDED IN MOTEL ROOMS. As of this printing.
Please check with motel.

Ramada Inn

840 S. Indian Hills Boulevard, Claremont, CA (909) 621-4831 (800) 228-2828

Shilo Inn

3200 Temple Avenue, Pomona, CA.....(909) 598-0073

Allstar Inns

2470 S. Garey Avenue, Pomona, CA.....(909) 591-1871

Ontario Holiday Inn

3400 Sheby, Ontario, CA.....(909) 466-9600

Hampton Inn

3145 E. Garvey, W. Covina, CA 91723 (off ramp Barranca).....(626) 967-5800

Claremont Inn

555 W. Foothill Boulevard.....(909) 626-2411

THESE SHOWS ARE HELD UNDER AMERICAN KENNEL CLUB RULES

21st and 22nd All Breed Dog Shows of the
ANGELES CANYON DOG CLUB

(Licensed by the American Kennel Club)

Industry Hills Expo Center
Grand Arena
16200 Temple Avenue
City of Industry, California 91744

Thursday, April 18, 2013
Friday, April 19, 2013
Show Hours: 7 a.m. to 8 p.m.

All judging will be outdoors under cover/unbenched.

RAMP - At the discretion of the judge, the following breeds may be judged on a ramp: Clumber Spaniels, Field Spaniels, Sussex Spaniels, Welsh Springer Spaniels, Irish Terriers, Kerry Blue Terriers, Soft Coated Wheaten Terriers, Staffordshire Bull Terriers, Chinese Shar-Pei, Chow Chows, Keeshonden, and Polish Lowland Sheepdogs. Whippets may be judged on the ground, table or ramp. Basset Hounds and Bulldogs are expected to be judged on a ramp. Boykin Spaniels may be judged on a ramp or table. For the judging of juniors the ramp may be used at the discretion of the judge for the ramp breeds. Ramps may be used in emergency situations to judge any breed. (In all but emergency situations, the exhibitor has no recourse. In an emergency situation, where use of a ramp is not indicated in the premium list, an exhibitor has the option of withdrawing their entry and receiving a refund.) 1/1/13



AMERICAN
KENNEL CLUB™

CERTIFICATION

Permission has been granted by the American Kennel Club for the holding of this event under American Kennel Club rules and regulations.

James P. Crowley, Secretary

Superintendents

Jack Bradshaw Dog Show Superintendents/Est. 1898

Post Office Box 227303, Los Angeles, California 90022

Telephone: (323) 727-0136; FAX: (323) 727-2949; WEB: www.jbradshaw.com

Jack Bradshaw / Marion Bradshaw / Barbara Bradshaw / Susan Bradshaw MacLyman

Julie Bradshaw Draper/John Bradshaw/Eloise O'Donnell/Cindy Marshall/Keith MacLyman

One or more of the above superintendents will attend the show

OFFICERS OF THE ANGELES CANYON DOG CLUB

PresidentDavid Murray
Vice-PresidentNorman Patton
TreasurerDarlus Gerson
SecretaryJohnnie Maschoff

7033 Brown Road, Inyokern, CA 93527

BOARD OF DIRECTORS

Judy Anderson, Charles Gerson, Janice Pardue, Katherine Vega, Gregory Isaacs
And all officers of the club

BENCH SHOW COMMITTEE

Norman Patton, Robert Widden, David Murray and officers

SHOW COMMITTEE

Norman L. Patton Show Chairman
2131 E. Riverdale Street, Mesa, AZ 85213
David Murray Assistant Show Chairman

GROUP DIRECTORS

Sporting GroupDavid Murray
Hound Group Judy Anderson
Working GroupGregory Isaacs
Terrier Group Kathy Vega
Toy Group Mary J. Phillips
Non-Sporting Group Jeanine Sullivan
Herding Group Laura Young

LIFETIME MEMBER

Margaret Young Renihan – Gary Wittmeier – Carole Edwards

VETERINARIAN ON CALL

Diamond Bar Veterinary Clinic, 1131 Grand Avenue, Diamond Bar, CA 91765. (909) 861-9561
East Valley Emergency Pet Clinic, 938 N. Diamond Bar Blvd, Diamond Bar, CA 91765. (909) 861-5737

Exhibitors should follow their veterinarians' recommendation to assure their dogs are free of internal and external parasites, any communicable diseases, and have appropriate vaccinations.

ACDC COMMITTEES

Muriel Sullivan – Jeanine Sullivan Trophy Chairman
Donna Ashbrook Public Relations, Media Advertising, Promotion and Publicity
Donna Ashbrook and Don Bradley Booth Space
Concession space by reservation only. Contact Donna Ashbrook (818) 989-7337, (818) 989-7338
Limited space
Bob Widden, Melvin Pardue Day of Show Parking and Unloading
Gregory Isaacs, Thomas Powers, Charles Gerson, Don Bradley
Mary J. Phillips, Susan Morse, Ann Hurst Catalog Sales
Robert Widden, Thomas Powers and Charles Gerson Grounds
Kathy Vega Hospitality
Janice Pardue, Judy Anderson, Ann Hoffman, Darlus Gerson, Candice Gerson
..... Judges Ringside Hospitality
David Murray and Melvin Pardue Judges Transportation
Janice Pardue Flowers

SHOW OFFICIALS

Announcer – Pam Amos
Ron Mattson - Overnight Parking

OFFICIAL PHOTOGRAPHERS – Only these photographers are allowed in the rings.

Vicki Holloway, Hollowayphoto@mac.com, (951) 682-3164
Meg Callea, 200 E. Tramac Place, Shelton, WA 98584, (360) 426-2172

THE SHOW CHAIRMAN, ASSISTANT SHOW CHAIRMAN AND MEMBERS OF THEIR HOUSEHOLDS
WILL NOT ENTER DOGS IN THIS SHOW, NOR WILL THEY HANDLE DOGS THAT ARE ENTERED

THURSDAY AND FRIDAY

ALL ROSETTES OFFERED BY THE ANGELES CANYON DOG CLUB
ALL GROUP AND BEST IN SHOW TROPHIES OFFERED BY
THE ANGELES CANYON DOG CLUB, UNLESS OTHERWISE NOTED.

BEST IN SHOW

Rosette

Angeles Canyon Dog Club offers \$150.00 for Best In Show each day

\$75 gift certificated offered by The Store 4 Dogs on Thursday

Noz to Noz soft crate (winner to select crate size) offered by The Store 4 Dogs on Friday

RESERVE BEST IN SHOW

Rosette

Angeles Canyon Dog Club offers \$50.00 for Reserve Best In Show each day

GROUP TROPHIES – Rosettes offered for each group placement

THURSDAY

GROUP FIRST

Vendor Dollars - \$40.00 offered by Angeles Canyon Dog Club

GROUP SECOND

Vendor Dollars - \$30.00 offered by Angeles Canyon Dog Club

GROUP THIRD

Vendor Dollars - \$20.00 offered by Angeles Canyon Dog Club

GROUP FOURTH

Vendor Dollars - \$10.00 offered by Angeles Canyon Dog Club

FRIDAY

GROUP FIRST

Collectible – Trail of the Painted Pony Collectible and rosette

GROUP SECOND

Pair Silver-plated candlesticks

GROUP THIRD

Pair Silver-plated candlesticks

GROUP FOURTH

Pair Silver-plated candlesticks

JUNIOR SHOWMANSHIP

BEST JUNIOR HANDLER

Rolling grooming tote Thursday and Friday

First in Master Class – Ring Bag Thursday and Friday

First in all Open Classes – poop scoop Thursday

First in all Novice Classes – CD player Thursday

Fist in all Open Classes – CD player Friday

First in all Novice Classes – poop scoop Friday

2nd through 4th in any class – dog toys Thursday and Friday

Cavalier King Charles Spaniels (each day)

Classic Cavaliers – Norman Patton and Gary Wittmeier offer hand painted Cavalier items for

Best of Breed – pendant, Best of Opposite Sex – framed tile, Winners Dog and Winners Bitch - business card holder

Pugs (each day)

Norman Patton offers hand painted items for Best of Breed – framed tile, Best of Opposite Sex – insulated coffee mug, Winners Dog and Winners Bitch - business card holder

BOOTH SPACE

Angeles Canyon Dog Club

Cluster Vendor Chairman

Donna Ashbrook

(818) 989-7337

(818) 989-7338

Concession space is limited to the retailing
of dog-related products and services

Concession space is by invitation only.

THURSDAY

BEST PUPPY COMPETITION

On Thursday, the Angeles Canyon Dog Club as part of its all breed show, will hold a Best Puppy Competition. Competition will be for Best of Breed or Variety Puppy, Best Puppy in Group (placements 1 through 4) and Best Puppy in Show.

RULES: During the course of regular breed judging, the assigned judge will select a Best Puppy from the class winners of the six to nine month and nine to twelve month classes. This will be done after Best of Breed judging unless the Best Puppy award is automatic. Example: An entry from the puppy classes is awarded Best of Winners or Best of Breed. Only dogs or bitches undefeated in a puppy class are eligible for Best Puppy Competition. If the first place winner is not present the second place winner **may not compete**.

All Best Puppies will compete in their respective Best Puppy Groups. All Best in Group puppies will compete for Best Puppy in Show.

THERE WILL BE NO ADDITIONAL ENTRY FEE FOR THIS COMPETITION. PUPPIES MUST BE ENTERED IN THE REGULAR 6 TO 9 MONTH OR 9 TO 12 MONTH PUPPY CLASS TO BE ELIGIBLE FOR THE BEST PUPPY COMPETITION.

PRIZES AND RIBBONS: ACDC offers a flat ribbon to be awarded to Best Puppy in each breed or variety.

Best Puppy in Show - \$100.00 and a rosette

Group First - \$15.00 and a rosette

Group Second - \$10.00 and a rosette

Group Third - \$10.00 and a rosette

Group Fourth - \$10.00 and a rosette

BEST PUPPY IN SHOW AND BEST PUPPY GROUP JUDGES:

To be announced

FRIDAY

BEST BRED BY EXHIBITOR COMPETITION

On Friday, the Angeles Canyon Dog Club as part of its all breed show, will hold a Best Bred-By-Exhibitor Competition. Competition will be for Best Bred-By-Exhibitor in each breed or variety, Best Bred-By-Exhibitor in Group (placements 1 through 4) and Best Bred-By-Exhibitor in Show.

RULES: The same rules that apply to eligibility to compete in the regular Bred-By-Exhibitor classes apply to eligibility to compete in Best Bred-By-Exhibitor in Breed or Variety, Group and Best in Show. During the course of regular breed judging, the assigned judge will select a Best Bred-By-Exhibitor from the class winners of the Bred-By-Exhibitor classes. This will be done after Best of Breed judging unless the Best Bred-By-Exhibitor award is automatic. Example: An entry from the Bred-By-Exhibitor classes is awarded Best of Winners or Best of Breed. Only dogs or bitches undefeated in a Bred-By-Exhibitor class are eligible for Best Bred-By-Exhibitor Competition. If the first place winner is not present the second place winner may not compete.

All Best Bred-By-Exhibitor Dog/Bitches will compete in their respective Bred-By-Exhibitor Groups. All Best in Group Bred-By-Exhibitor winners will compete for Best Bred-By-Exhibitor in Show.

THERE WILL BE NO ADDITIONAL ENTRY FEE FOR THIS COMPETITION. ONLY ENTRIES IN THE REGULAR BRED BY EXHIBITOR CLASSES ARE ELIGIBLE FOR THE BEST BRED-BY-EXHIBITOR COMPETITION.

PRIZES AND RIBBONS: ACDC offers a flat ribbon to be awarded to Best Bred by Exhibitor in each breed or variety.

Best Bred by Exhibitor in Show - \$100.00 and a rosette
Group First - \$15.00 and a rosette
Group Second - \$10.00 and a rosette
Group Third - \$10.00 and a rosette
Group Fourth - \$10.00 and a rosette

BEST BRED-BY-EXHIBITOR IN SHOW AND GROUP JUDGES:

To be announced

The BURBANK KENNEL CLUB

(Licensed by the American Kennel Club)

ALL BREED DOG SHOWS

Show Hours 7:00 AM TO 7:00 PM

All judging will be outdoors under cover/unbenched.

SATURDAY and SUNDAY

April 20 and 21, 2013

Industry Hills Expo Center

Grand Arena

16200 Temple Avenue

City of Industry, California 91744

No classes are offered for German Shepherds Saturday or Sunday.

RAMP - At the discretion of the judge, the following breeds may be judged on a ramp: Clumber Spaniels, Field Spaniels, Sussex Spaniels, Welsh Springer Spaniels, Portuguese Podengo Pequeno, Irish Terriers, Kerry Blue Terriers, Soft Coated Wheaten Terriers, Staffordshire Bull Terriers, Chinese Shar-Pei, Chow Chows, Keeshonden, and Polish Lowland Sheepdogs. Whippets may be judged on the ground, table or ramp. Basset Hounds and Bulldogs are expected to be judged on a ramp. Boykin Spaniels may be judged on a ramp or table. For the judging of juniors the ramp may be used at the discretion of the judge for the ramp breeds. Ramps may be used in emergency situations to judge any breed. (In all but emergency situations, the exhibitor has no recourse. In an emergency situation, where use of a ramp is not indicated in the premium list, an exhibitor has the option of withdrawing their entry and receiving a refund.) 1/1/13



AMERICAN
KENNEL CLUB™

CERTIFICATION

Permission has been granted by the American Kennel Club for the holding of this event under American Kennel Club rules and regulations.

James P. Crowley, Secretary

Superintendents

Jack Bradshaw Dog Show Superintendents/Est. 1898

Post Office Box 227303, Los Angeles, California 90022

Telephone: (323) 727-0136; FAX: (323) 727-2949; WEB: www.jbradshaw.com

Jack Bradshaw / Marion Bradshaw / Barbara Bradshaw / Susan Bradshaw MacLyman

Julie Bradshaw Draper/John Bradshaw/Eloise O'Donnell/Cindy Marshall/Keith MacLyman

One or more of the above superintendents will attend the show



MARILYN MAYFIELD
President



BENJAMIN MOSES
Show Chair/Vice President
PO Box 6307, Burbank, CA 91510



SHELLEY CAFFERTY
Secretary
PO Box 6307, Burbank, CA 91510



STUART LUNBECK
Board Member



VALERIE ANNE YALE
Treasurer



DARYL GROVES
Board Member



ROBERT WIDDEN
Board Member

DOG SHOW COMMITTEE

Catalogue Advertising

SHELLEY CAFFERTY

Club and Catalogue Sales

DARYL GROVES

Decorations

SHELLEY CAFFERTY

Grounds

BENJIE MOSES – STU LUNBECK – MEL PARDUE

Hospitality - Morning

CELEST MARINO – HEATHER GRAY

Judges Lunch

SUE MOSES

Judges Hospitality

MARILYN MAYFIELD

Publicity

VALERIE ANNE YALE

Ring Hospitality

SUZANNE MARCHETTI

Judges Transportation

SHELLEY CAFFERTY

Trophies

KATHIE LUNBECK

Vendors

STUART LUNBECK

OFFICIALS

Announcer

DICK VAIL

Chief Stewards

Saturday – JANICE PARDUE; Sunday - ROBERT WIDDEN

Photographers

Kitten Rodwell Flashkatphotos@aol.com, Vicki Holloway Hollowayphoto@mac.com

Only these photographers are allowed in rings.

VETERINARIAN ON CALL

Diamond Bar Veterinary Clinic, 1131 Grand Avenue, Diamond Bar, CA 91765. (909) 861-9561

East Valley Emergency Pet Clinic, 938 N. Diamond Bar Blvd, Diamond Bar, CA 91765. (909) 861-5737

Exhibitors should follow their veterinarians' recommendation to assure their dogs are free of internal and external parasites, any communicable diseases, and have appropriate vaccinations.

<p>GET IN THE SPIRIT – WEAR BLACK & WHITE</p>
--

LITHOGRAPH

The
BURBANK
KENNEL CLUB

**LIMITED EDITION LITHOGRAPHS BY
MR. STEPHEN HUBBELL**

SIGNED AND NUMBERED \$75.

PRINT ONLY \$25.

SHIPPING INCLUDED

THE COVER PICTURE IS BY ARTIST MR. STEPHEN J. HUBBELL
AND A LIMITED NUMBER OF SIGNED 16x24 FULL COLOR
LITHO'S ARE AVAILABLE AT \$75 EACH. ALSO AVAILABLE ARE
FULL COLOR LITHO'S 16x24 \$25 EACH. THESE PRICES
INCLUDE TAX AND SHIPPING COST.

NOTE: BKC IS NOT ON LITHO'S BALLOON

MAIL CHECK OR MONEY ORDER
payable to:

The
BURBANK
KENNEL CLUB

PO Box 6307, Burbank, CA 91510

CATALOG ADVERTISING

Full Page / Exhibitors-Breeders.....\$50.00 Full Page / Commercial..... \$200.00
Half Page / Exhibitors-Breeders.....\$30.00 Half Page / Commercial..... \$125.00
Inside Back Cover..... \$300.00

Price includes one picture. Payment in full must accompany copy with checks payable to
The Burbank Kennel Club. All ads must be camera ready.

DEADLINE FOR ADVERTISING IS March 22, 2013

Send copy and payment to:

MRS. SHELLEY CAFFERTY, P.O. Box 6307, Burbank, CA 91510

TROPHIES

Saturday and Sunday

BEST IN SHOW

The Burbank Kennel Club offers a Director's Chair

To be presented by: Benjie Moses & Marilyn Mayfield

VARIETY GROUPS

THE BURBANK KENNEL CLUB OFFERS A SPECIAL EDITION OF THE
CLUB PICTURE, A SIGNED AND NUMBERED LITHO BY THE PRIZE
WINNING ARTIST MR. STEPHEN HUBBELL, TO BE PRESENTED BY
THE FOLLOWING MEMBERS:

SPORTING Suzanne Marchetti
HOUNDS Shelley Cafferty and Valerie Anne Yale
WORKING Daryl Groves
TERRIERS Bob Widden
TOYS Stuart and Kathie Lunbeck
NON-SPORTING Benjie and Sue Moses
HERDING Heather Gray and Celest Marino

JUNIOR SHOWMANSHIP

Club picture by Stephen Hubbell – 1st in each class.

Best Junior Handler if wearing Black & White clothing will receive a gift card.

**GET IN THE SPIRIT –
WEAR BLACK & WHITE**

CHALLENGE TROPHY

The RALF REVELEY & LARRY HATHAWAY CHALLENGE TROPHY

SPORTING GROUP First

In memory of their dedication to THE BURBANK KENNEL CLUB and the Sport of Dogs, the Burbank Kennel Club, through the generosity of Larry Hathaway, offers this original twelve-inch bronze sculpture by D.L. Engle, in memory of our very special members
RALF REVELEY AND LARRY HATHAWAY.

To retain possession of this trophy,
it must be won three times by identical owner & co-owners, not necessarily with the same dog.

The "Camera Dog" will remain with the club until retired.



THE BURBANK KENNEL CLUB offers for First Place in the Working Group, through the generosity Lee Anthony Reasin, **THE THOMAS L. MAYFIELD CHALLENGE TROPHY** which depicts the "Old Working Group" as Tom originally knew it. A Dannyquest Design original, this cast Bronze on a mahogany base by artist Tony Acevedo, must be won three times by the same owner and co-owners, not necessarily with the same dog, for permanent possession.

This trophy will remain with the club until retired.

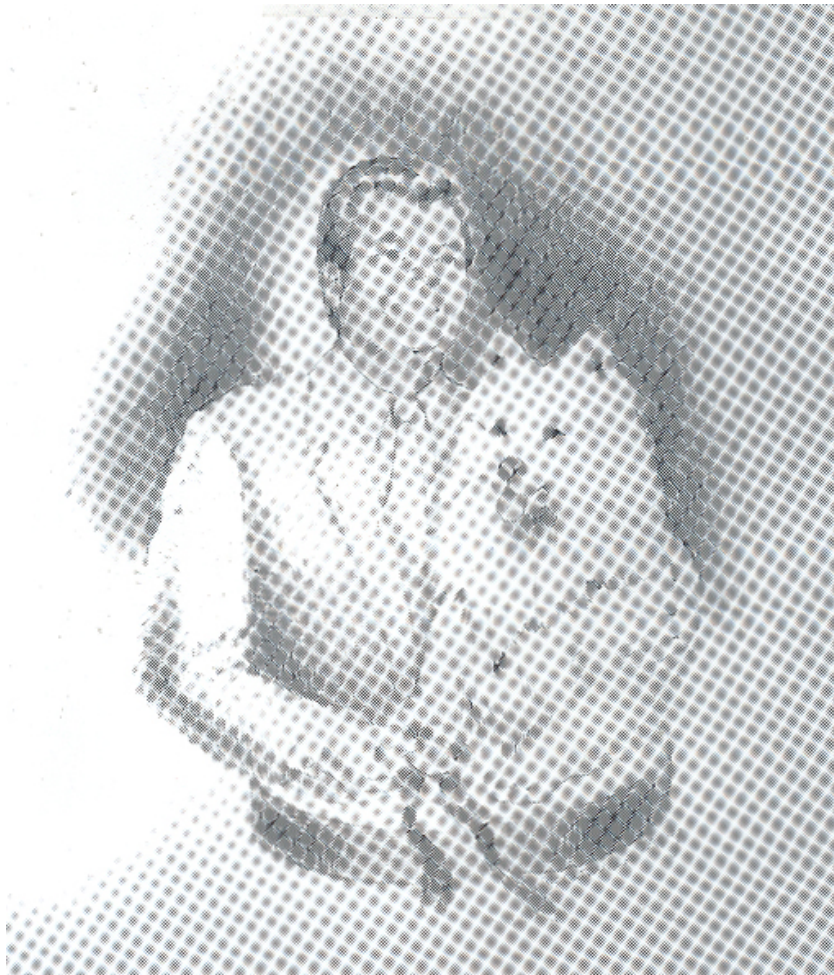
MEMORIAL TROPHY

The THOMAS L. MAYFIELD MEMORIAL TROPHY

BEST IN SHOW

Tom Mayfield was a friend to many and gave much of himself to the sport of dogs. We wish to celebrate his life and his many contributions to The Burbank Kennel Club

The THOMAS L. MAYFIELD MEMORIAL TROPHY, of Tom and his beloved Best In Show Samoyed, Ch. Snowlines Joli Shashan, CDX



This is a sketch of the original sculpture by Edwina Talley.

The Burbank Kennel Club

Vendor Chairman

Stuart Lunbeck

23039 Ostronic Drive

Woodland Hills, Ca 91367

(818) 347-2277

nascarstu@gmail.com

Concession space is limited to the retailing of dog-related products and services

No dogs owned or co-owned by members of the Burbank Kennel Club will be eligible for entry at Burbank Kennel Club shows. No Immediate family member or member of their household will exhibit at the Burbank Kennel Club shows.

<p>BLACK & WHITE – DON'T FORGET</p>
--

NEW CHAMPION RIBBON

NEW GRAND CHAMPION RIBBON



The

BUROBANK

KENNEL CLUB

is pleased to offer
a beautiful Black & White Rosette
to your dog or bitch if finished at our show.
To collect your rosette you must be wearing
BLACK and WHITE clothing.
For a handler to collect your ribbon,
they must be dressed in **BLACK and WHITE**.
Show your winners ribbon to the Catalog Table and
tell them you have a
new **CHAMPION** or **GRAND CHAMPION**

SATURDAY and SUNDAY

OWNER-HANDLER COMPETITION

The AKC Owner-Handler Series is a non-titling competition for dogs that are exhibited by their owners that are not professional handlers. This series of special competitions will be offered at select dog shows across the country.

All dogs that are owner-handled and are not owned or exhibited by professional handlers* meet the requirements for this competition. Exhibitors must declare their dog is Owner-Handler eligible at the time of entry using the check box on the entry form. Eligible dogs will be identified by an asterisk in the steward's book & the catalog. **Dogs must be handled throughout the competition by an eligible owner. Professional handlers, household members and assistants to current professional handlers may not exhibit the dog in any competition during the entire show.**

Owner-Handler Best of Breed will be selected from the dogs that are eligible to compete in the Best of Breed competition including Winners Dog, Winners Bitch and winners of the non-regular classes.

- If the Best of Breed/Variety winner is Owner-Handler competition eligible, it will automatically be Owner-Handled Best of Breed/Variety and be eligible to compete in both the regular as well as the Owner-Handler group.
- If the Best of Breed/Variety winner is not eligible for Owner-Handler competition and the Best of Opposite Sex to Best of Breed/Variety is eligible, the Best of Opposite Sex to Best of Breed/Variety will compete against the eligible exhibits of the other sex to determine Owner-Handled Best of Breed/Variety.
- If neither the Best of Breed nor the Best of Opposite Sex to Best of Breed/Variety are Owner-Handler competition eligible and Select Dog & Select Bitch are both eligible, the judge is to choose Best Owner-Handled exhibit from the Selects and eligible Winners Dog or Winners Bitch.
- If one of the Selects is eligible, excuse all Champions and non-regular class winners of the same sex and then choose Best Owner-Handled exhibit from the remaining dogs of the opposite sex including the eligible Winners.
- If Best of Breed, Best of Opposite Sex to Best of Breed, Select Dog & Select Bitch are not eligible, the judge may choose any eligible dog remaining in the ring including Winners Dog or Winners Bitch as Owner-Handled Best of Breed/Variety.

The breed will not be represented in the Owner-Handler Group if there is no eligible dog competing in the Best of Breed or in Best of Winners competition.

**Professional handlers are defined as any person who belongs or has belonged to a professional handlers' organization, distributed rate cards, or otherwise advertised or represented themselves as handling dogs for pay or received payment for handling a dog.*

A flat ribbon will be awarded for Best Owner Handler in each breed or variety.

Judges: Mr. Wood Wornall will judge all Saturday Groups.

Mrs. Janice Pardue will judge all Sunday Groups

BOHIS to be announced

JUNIOR SHOWMANSHIP COMPETITION

Novice Junior Class: For Boys and Girls who are at least 9 years old and under 12 years old on the day of the show and who, at the time entries close, have not won three First Place awards with competition present in a Novice Class at a licensed or member show.

Novice Intermediate Class: For Boys and Girls who are at least 12 years old and under 15 years old on the day of the show and who, at the time entries close, have not won three First Place awards with competition present in a Novice Class at a licensed or member show.

Novice Senior Class: For Boys and Girls who are at least 15 years old and under 18 years old on the day of the show and who, at the time entries close, have not won three First Place awards with competition present in a Novice Class at a licensed or member show.

Open Junior Class: For Boys and Girls who are at least 9 years old and under 12 years old on the day of the show and who, at the time entries close, have won three First Place awards with competition present in a Novice Class at a licensed or member show.

Open Intermediate Class: For Boys and Girls who are at least 12 years old and under 15 years old on the day of the show and who, at the time entries close, have won three First Place awards with competition present in a Novice Class at a licensed or member show.

Open Senior Class: For Boys and Girls who are at least 15 years old and under 18 years old on the day of the show and who, at the time entries close, have won three First Place awards with competition present in a Novice Class at a licensed or member show.

Master Class: This class will be for boys and girls who are at least 9 years old and under 18 years on the day of the show, and who have won the 10 first place wins in an Open class with competition to be eligible to enter the Limited C lass Competition. The calendar for this class will be November1 - October3 1 of the following year. .All Juniors meeting the criteria for this class are required to enter the Master Class and may change their entry the day of the show if entries have already closed. Once the eligibility time frame for that year has passed all participants return to the Open Class to complete for the following year

Each dog handled in a Junior Showmanship Class must be entered in one of the Breed or Obedience Classes at the show, or must be entered for Junior Showmanship only. However, a dog may be substituted. Such substitution must be accompanied by an official AKC entry form. All such substitutions must be made one half-hour prior to the judging of any Junior Showmanship Classes at the show. Each dog must be owned or co-owned by the Junior Handler or by the Junior Handler's father, mother, brother, sister, uncle, aunt, grandfather or grandmother, including step and half relations or by a member of the Junior Handler's household. Every dog entered for Junior Showmanship must be eligible to compete in Dog Shows or in Obedience Trials. BITCHES IN SEASON ARE NOT ELIGIBLE. A dog that has been excused or disqualified by a Breed Judge or by a Bench Show Committee may still be handled in Junior Showmanship if eligible to compete in Obedience Trials. A dog that has been rejected, dismissed, or excused by the Veterinarian for the protection of the other dogs at the show or for the protection of the dog excused may not be handled in Junior Showmanship.

Junior Handlers who win a third Novice Class with competition present after the closing of entries for a show may transfer their entry from the Novice Class to the Open Class provided that this transfer is made by the Superintendent at least one half-hour prior to the scheduled start of any regular conformation judging or one half-hour prior to the scheduled start of Junior Showmanship judging at the show, whichever is earlier.

Winning of first place in an Open Class at this show may qualify or count toward qualification for entry in certain future limited Junior Showmanship Classes. For information on eligibility requirements for limited Junior Showmanship Classes which have been approved to date by AKC go online at www.akc.org.

Junior Handler's must include their AKC Junior Handler identification number on the entry blank. You may obtain your number by calling the AKC (919) 233-9767.

Notice: Be sure all information for Junior Showmanship Classes is entered on the front and back of the entry form.

ATTENTION EXHIBITORS: All persons and animals on the show grounds at any time while the show is in progress, by attending this show or participating therein, do grant the club the right to photograph, televise, audiotape, videotape or otherwise use their likeness and voice in any manner without further release or consent.

GROOMING: Crates, carts with crates, grooming tables, exercise pens or canopies or umbrellas will only be allowed in aisles at scheduled judging time and must be removed immediately after breed judging. These setups are to be in designated areas only, except as otherwise specifically authorized by the Show Chairs. No grooming or setups will be allowed in the day of show parking lot. Mats must be placed under pens in grooming areas.

GENERATORS: Generators are not allowed in the arena, only outside. Limited electricity.

-FAILURE TO COMPLY IMMEDIATELY WITH ANY DIRECTION OF THE SHOW COMMITTEE OR ITS DESIGNEES MAY RESULT IN A BENCH SHOW COMMITTEE HEARING AND REVOCATION OF AN INDIVIDUAL'S RIGHT TO REMAIN ON THE GROUNDS AND REMOVAL OF EQUIPMENT MAY RESULT.

-SHOW SITES ARE BECOMING MORE DIFFICULT TO OBTAIN AS ARE ACCOMMODATIONS THAT WILL ACCEPT DOGS. THE ANGELES CANYON DOG CLUB REQUESTS YOUR CO-OPERATION IN CLEANING UP AFTER YOURSELVES AND YOUR DOGS.

-EXHIBITORS ARE REMINDED THAT THEY ARE RESPONSIBLE FOR CLEANING UP THEIR OWN GROOMING AREA.

DIRECTIONS TO SHOW SITE

FROM THE LOS ANGELES AREA

I-10 (San Bernardino Fwy – East) Exit Azusa Avenue, turn right and travel south to Temple Avenue. Turn right at Temple Avenue and continue just over a mile. Signal lights and entrance will be on left-hand side. Enter at 16000 Temple Avenue.

60 (Pomona Fwy – East) Exit Azusa Avenue, turn left and travel north to Temple Avenue. Turn left on Temple Avenue. Signal lights and entrance will be on left-hand side. Enter at 16000 Temple Avenue.

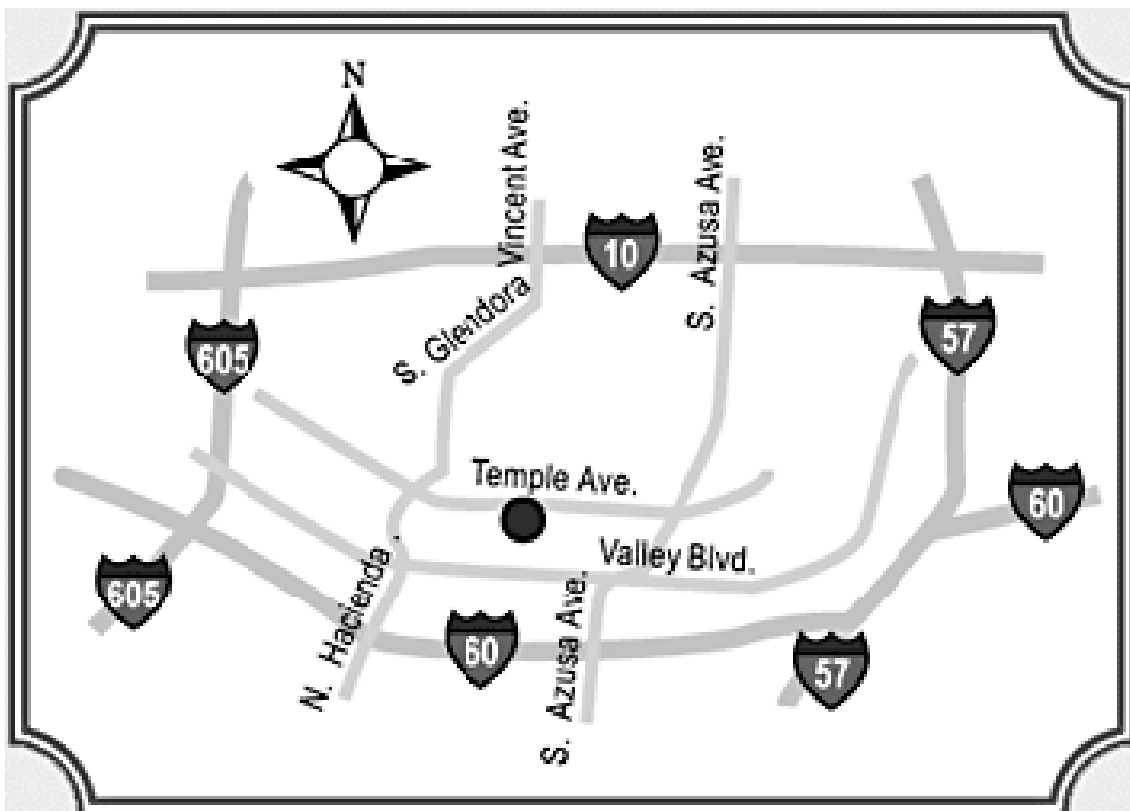
FROM BURBANK

I-5 South to 60 East. Exit Hacienda Boulevard, turn left and travel north to Temple Avenue. Turn right on Temple Avenue, pass three signal lights and the entrance will be on right-hand side. Enter at 16000 Temple Avenue.

FROM POMONA-SAN BERNARDINO

I-10 (San Bernardino Fwy – West) Exit Azusa Avenue, turn left and travel south to Temple Avenue. Turn right on Temple Avenue and continue for just over a mile. Signal lights and entrance will be on left-hand side. Enter at 16000 Temple Avenue.

60 (Pomona Fwy – West) Exit Azusa Avenue, turn right and travel north to Temple Avenue. Turn left on Temple Avenue and continue for just over a mile. Signal lights and entrance will be on left-hand side. Enter at 16000 Temple Avenue.



ADDITIONAL RULES

1. Entries must reach the Superintendent, Jack Bradshaw, 5434 East Olympic Boulevard, Los Angeles CA, 90022, by Noon, Wednesday, April 3, 2013 PDT. Fees should accompany entries. This club and/or its superintendent assume no responsibility for wrong or incomplete information given on the entry blank by the owner or agent of the owner. This club and its superintendents assume no responsibility for the owner or owner's agents entering a dog in a class in which the dog is not eligible to compete, or for entering the same dog twice.
2. Returned Checks do not constitute a valid entry fee. The Superintendent will add a collection fee to the amount of each returned check and declined credit card. Subsequent returned checks for the same exhibitors may result in their being put on a CASH ONLY basis. The returned check or declined credit card MUST BE MADE GOOD by cash or money order BEFORE the dog will be allowed in the ring.
3. Exhibitors' Identification tickets and judging programs will be mailed to the address given on the entry blank. If not received within a reasonable time prior to the show, notify the superintendent. Tickets returned by the Post Office marked 'undeliverable' will be held at the Superintendent's Office. PLEASE BRING YOUR IDENTIFICATION TICKETS TO THE SHOW.
4. During the hours of judging owners are to be on call, and have their dogs ready to bring into the judging ring promptly, in order that the judging will not be delayed. Dogs need only be present for their judging. Dogs not needed for further judging may be excused. It is the responsibility of the exhibitor to have his dog ready to be shown and at the entrance of the judging ring when the steward calls for the class. Owners of dogs or the handlers of the dogs alone are responsible for the presence of their dogs in the judging rings. It is not the responsibility of the ring steward, nor of any agent of the show-giving club to locate any dog, its owner or handler, when the dog's presence is needed in a judging ring. It should be understood by every exhibitor and handler that waiting for dogs to be brought into the ring is a courtesy extended to the owner or handler of the dog. There is no rule of this club nor of The American Kennel Club that requires a judge to wait for an owner or handler to bring his dog into the ring. Show hours 7:00 a.m. to 8:00 p.m.
5. Trophies and prizes will be awarded in the judging ring before the completion of the judging of the breed and the superintendent's office advised at once, in the event of any discrepancy. All trophies must be claimed the day of the show. None will be mailed.
6. Exhibitors are admonished to make themselves familiar with the agreement of the American Kennel Club, referred to on the reverse side of the entry blanks that accompany this premium list. Rule books are available at the Superintendent's table at the shows or may be obtained from the A.K.C. online at www.akc.org
7. The club, its superintendents or their employees will not be responsible for the loss of or damage to any dog exhibited, whether the result of accident or other causes and in addition assumes no responsibility for any loss, damage or injury sustained by an exhibitor or handler. It is distinctly understood that every dog at this show is in the care and custody and control of his owner or handler during the entire time the dog is on the show premises.
8. No grooming tables, pens, crates, crates on carts (including canopies and umbrellas as part of the setups) will be allowed in the aisles. All grooming must be done away from the judging ring in areas specified by the club.
9. Entry fees shall NOT be refunded in the event that a dog is absent, disqualified, sick, lame, excused by veterinarian or judge, barred from competition by action of the Bench Show Committee, or because the dog is ineligible to compete due to being entered incorrectly. There is no refund of entry fee for duplicate entry. There will be a \$2.00 fee charged for cancellation of entry prior to closing of entries.
10. There is no provision offered for unentered dogs at this show.
11. Declination of Entries. The Angeles Canyon Dog Club and the Burbank Kennel Club may decline any entries for cause and may refuse to receive or may remove any dog on account of disease, viciousness or other causes, and no one shall have any claim or recourse against the Kennel Club or any official thereof.
12. If, because of riots, civil disturbances or other acts beyond the control of the management, it is impossible to open or complete the show, no refund of entry will be made.
13. Do not leave any dogs in closed vehicles.
14. Dogs which according to their owners' records have completed the requirements for a championship after the closing of entries for the show but whose championships are unconfirmed, may be transferred from one of the regular classes to the Best of Breed or Variety Competition, provided this transfer is made by the Superintendent at least one half hour prior to the start of the earliest Conformation judging at the Show.
15. Junior Handlers who win a third Novice Class after the closing of entries may transfer their entry from the Novice Class to the Open Class provided that this transfer is made by the Superintendent at least one half-hour prior to the scheduled start of the earliest conformation judging or one half-hour prior to the start of Junior Showmanship judging at the Show, whichever is earlier.
16. No grooming setups in the parking lot.
17. No alcohol is allowed on the show grounds.
18. No coolers in the Arena.

CLASSIFICATION

This classification applies to each breed, whose name is listed. Any change in regular or non-regular classes appears under the individual breed heading.

REGULAR CLASSES

Puppy Dogs	Puppy Bitches
6 mos. and under 9 mos.	6 mos. and under 9 mos.
Puppy Dogs	Puppy Bitches
9 mos. and under 12 mos.	9 mos. and under 12 mos.
12 mos. and under 18 mos. Dogs	12 mos. and under 18 mos. Bitches
Novice Dogs	Novice Bitches
Amateur Owner Handler Dogs	Amateur Owner Handler Bitches
Bred by Exhibitor Dogs	Bred by Exhibitor Bitches
American Bred Dogs	American Bred Bitches
Open Dogs	Open Bitches
Winners Dog	Winners Bitch

NON-REGULAR CLASSES, INVOLVING SINGLE DOG ENTRIES

Veteran Dogs - For dogs 7 years of age and older

Veteran Bitches - For bitches 7 years of age and older

BEST OF BREED (VARIETY) COMPETITION

Best of Breed (Variety) Competition - "The following categories of dogs may be entered and shown in Best of Breed competition. Dogs that are Champions of Record. Dogs which according to their owner's records have completed the requirements for a championship but whose championships are unconfirmed. The entry and showing of dogs whose championships are unconfirmed is limited to a period of 90 days from the date of the show where a dog completed the requirements for a championship according to the owner's records. If, at the end of the 90-day period, the championship of a dog has not been confirmed by the American Kennel Club, no further entries of the dog for Best of Breed competition are to be made until its championship has been confirmed by the AKC."

JUNIOR SHOWMANSHIP CLASSIFICATION

Novice Junior	Novice Intermediate	Novice Senior
Open Junior	Open Intermediate	Open Senior
		Master

RIBBON PRIZES

The following ribbon prizes will be awarded:

First Prize - Blue Ribbon	Third Prize - Yellow Ribbon
Second Prize - Red Ribbon	Fourth Prize - White Ribbon
Winners - Purple Ribbon	
Reserve Winners - Purple and White Ribbon	Best of Winners - Blue and White Ribbon
Best of Breed & Best of Variety of Breed - Purple and Gold Ribbon	
Best of Opposite Sex to Best of Breed or Variety of Breed - Red and White Ribbon	
Select - Light Blue and White Ribbon	
Best in Show - Red, White and Blue Rosette	
Reserve Best In Show - Red, White and Yellow Rosette	

And the following ribbon prizes for all non-regular classes:

First Prize - Rose Ribbon	Third Prize - Light Green Ribbon
Second Prize - Brown Ribbon	Fourth Prize - Gray Ribbon

ACDC & BKC RESERVED OVERNIGHT PARKING INFORMATION

Parking reservations will be assigned in the order received. If you wish to park next to someone, the reservations must be received in the same envelope. All spaces must be reserved for 3 nights minimum. All spaces are 22' x 40'.

If trailer and tow vehicle together exceed 40 ft., 2 spaces must be reserved; the tow vehicle may be parked along side if it does not overlap adjoining spaces. If your tow vehicle does not fit into your reserved space, it will be moved, at an additional charge, to one that will accommodate it. Oversized tow vehicles will be moved to the day-of-show parking area, and charged accordingly. Tow vehicles will be parked in a designated area, to be assigned by the Parking Chair and charged \$10.00 per day. No waste or gray water is to be dumped on the grounds. Additional space of vehicles over regular space size can be purchased at check in.

Reserved parking will be available:

Wednesday 2 pm – 10 pm
Thursday/Friday/Saturday 6-7 AM and after BIS to 10 PM
Sunday 6-7 AM

BKC and ACDC RESERVE THE RIGHT TO REVOKE THE PARKING PRIVILEGES OF ANYONE WHO IS ABUSIVE OR WHO DOES NOT COMPLY WITH OUR PARKING REGULATIONS.

**PARKING RESERVATIONS MUST BE RECEIVED BY APRIL 3, 2013.
PROOF OF HANDICAPPED PARKING PRIVILEGES MUST BE SENT WITH PARKING RESERVATIONS.**

COST:

Regular space \$45 per night. Additional space at \$45 per space.

Mail reservations, with full payment to:

Ron Mattson, 461 Dena Drive, Newbury Park, CA 91320-2904

To receive a parking confirmation, please send a stamped, self-addressed envelope.

MAKE PARKING CHECKS PAYABLE TO: ANGELES CANYON DOG CLUB

**All vehicles must be removed from Parking Area Sunday after Best in Show.
All motorhomes must be self-contained.**

BKC/ACDC OVERNIGHT PARKING RESERVATION FORM
PLEASE READ THE ABOVE PARKING RULES CAREFULLY.

NAME: _____ TELEPHONE NO: _____

ADDRESS: _____ CITY: _____ STATE: ____ ZIP: _____

BREED(S): _____

RESERVATION DAYS: WED _____ THU _____ FRI _____ SAT _____

LENGTH OF RV: _____ FT. To be Unhooked? Yes No

SLIDE-OUT: Yes No

VEHICLE TYPE: Motor home, Truck/Trailer, Van, etc. _____

OFFICIAL AMERICAN KENNEL CLUB ENTRY FORM

ALL BREED DOG SHOWS

- ☐ **Thursday, April 18, 2013 ANGELES CANYON KENNEL CLUB**
☐ **Friday, April 19, 2013 ANGELES CANYON KENNEL CLUB**
☐ **Saturday, April 20, 2013 BURBANK DOG CLUB**
☐ **Sunday, April 21, 2013 BURBANK DOG CLUB**

Industry Hills Expo Center, Grand Arena, 16200 Temple Ave, City of Industry, CA
 MAIL ENTRIES WITH FEES TO: JACK BRADSHAW, Supt., P.O. Box 227303, Los Angeles, CA 90022
 MAKE CHECKS payable to JACK BRADSHAW. FAX (323) 727-2949 E-Mail Entries: www.jbradshaw.com
 ENTRIES must be received by the Superintendent not later than **NOON, WEDNESDAY, April 3, 2013 PDT**

FIRST ENTRY of a dog at each show **\$30.00**

Each additional entry of the same dog **\$15.00**

Junior Showmanship **\$15.00**

ENTRY MUST BE SIGNED at the bottom by the owner or owner's duly authorized agent, otherwise entry cannot be accepted. I enclose \$_____ for entry fees.

BREED		VARIETY 1		SEX
DOG 2 3 SHOW CLASS		CLASS 3 DIVISION Weight, color, etc.		
ADDITIONAL CLASSES	OBEDIENCE CLASS (Jump Height)	RALLY CLASS (Jump Height)	JR. SHOWMANSHIP CLASS	
NAME OF (See Back) JUNIOR HANDLER (if any)				JR. HANDLER NUMBER
FULL NAME OF DOG				
<input type="checkbox"/> AKC® NO. <input type="checkbox"/> PAL NO. <input type="checkbox"/> FOREIGN REG NO & COUNTRY		Enter number here DATE OF BIRTH PLACE OF BIRTH (list country) Do not print the above in the catalog.		
BREEDER				
SIRE				
DAM				
ACTUAL OWNER(S) _____ 4 (Please Print) OWNER'S ADDRESS _____ CITY _____ STATE _____ ZIP _____				

NAME OF OWNER'S AGENT
 (IF ANY) AT THE SHOW _____

I CERTIFY that I am the actual owner of the dog, or that I am the duly authorized agent of the actual owner whose name I have entered above. In consideration of the acceptance of this entry, I (we) agree to abide by the rules and regulations of The American Kennel Club in effect at the time of this event, and by any additional rules and regulations appearing in the premium list for this event, and further agree to be bound by the "Agreement" printed on the reverse side of this entry form. I (we) certify and represent that the dog entered is not a hazard to persons or other dogs. This entry is submitted for acceptance on the foregoing representation and Agreement. I (we) agree to conduct myself (ourselves) in accordance with all such Rules and Regulations (including all provisions applying to discipline) and to abide by any decisions made in accord with them.

☒ SIGNATURE of owner or his agent
 duly authorized to make this entry _____

Daytime Phone _____ E-Mail Address _____

AGREEMENT

I (we) agree that the club holding this event has the right to refuse this entry for cause which the club shall deem sufficient. In consideration of the acceptance of this entry and of the holding of this event and of the opportunity to have the dog judged and to win prizes, ribbons, or trophies, I (we) agree to hold the AKC, the event-giving club, their members, directors, governors, officers, agents, superintendents or event secretary and the owner and/or lessor of the premises and any provider of services that are necessary to hold this event and any employees or volunteers of the aforementioned parties, and any AKC approved judge, judging at this event, harmless from any claim for loss or injury which may be alleged to have been caused directly or indirectly to any person or thing by the act of this dog while in or about the event premises or grounds or near any entrance thereto, and I (we) personally assume all responsibility and liability for any such claim; and I (we) further agree to hold the aforementioned parties harmless from any claim for loss, injury or damage to this dog.

Additionally, I (we) hereby assume the sole responsibility for and agree to indemnify, defend and save the aforementioned parties harmless from any and all loss and expense (including legal fees) by reason of the liability imposed by law upon any of the aforementioned parties for damage because of bodily injuries, including death at any time resulting therefrom, sustained by any person or persons, including myself (ourselves), or on account of damage to property, arising out of or in consequence of my (our) participation in this event, however such, injuries, death or property damage may be caused, and whether or not the same may have been caused or may be alleged to have been caused by the negligence of the aforementioned parties or any of their employees, agents, or any other persons. **I (WE) AGREE THAT ANY CAUSE OF ACTION, CONTROVERSY OR CLAIM ARISING OUT OF OR RELATED TO THE ENTRY, EXHIBITION OR ATTENDANCE AT THE EVENT BETWEEN THE AKC AND THE EVENT-GIVING CLUB (UNLESS OTHERWISE STATED IN ITS PREMIUM LIST) AND MYSELF (OURSELVES) OR AS TO THE CONSTRUCTION, INTERPRETATION AND EFFECT OF THIS AGREEMENT SHALL BE SETTLED BY ARBITRATION PURSUANT TO THE APPLICABLE RULES OF THE AMERICAN ARBITRATION ASSOCIATION. HOWEVER, PRIOR TO ARBITRATION ALL APPLICABLE AKC BYLAWS, RULES, REGULATIONS AND PROCEDURES MUST FIRST BE FOLLOWED AS SET FORTH IN THE AKC CHARTER AND BYLAWS, RULES, REGULATIONS, PUBLISHED POLICIES AND GUIDELINES.**

INSTRUCTIONS

1. (Variety) if you are entering a dog of breed in which there are varieties for show purposes, please designate the particular variety you are entering, i.e., Cocker Spaniel (solid color black, ASCOB, parti-color), Beagles (not exceeding 13 in., over 13 in. but not exceeding 15 in.), Dachshunds (longhaired, smooth, wirehaired), Collies (rough, smooth), Bull Terriers (colored, white), Manchester Terriers (standard, toy), Chihuahuas (smooth coat, long coat), English Toy Spaniels (King Charles and Ruby, Blenheim and Prince Charles), Poodles (toy, miniature, standard).
2. The following categories of dogs may be entered and shown in Best of Breed competition: Dogs that are Champions of Record and dogs which, according to their owners' records, have completed the requirements for a championship, but whose championships are unconfirmed. The showing of unconfirmed Champions in Best of Breed competition is limited to a period of 90 days from the date of the show where the dog completed the requirements for a championship.
3. (Event Class) Consult the classification in this premium list. If the event class in which you are entering your dog is divided, then, in addition to designating the class, specify the particular division of the class in which you are entering your dog, i.e., age division, color division, weight division.
4. A dog must be entered in the name of the person who actually owned it at the time entries for an event closed. If a registered dog has been acquired by a new owner it must be entered in the name of its new owner in any event for which entries closed after the date of acquirement, regardless of whether the new owner has received the registration certificate indicating that the dog is recorded in his name. State on entry form whether transfer application has been mailed to the AKC. (For complete rules, refer to Chapter 11, Section 3.)
5. Mixed Breed dogs entering classes for Agility, Obedience, and Rally trials should mark Breed as AKC Canine Partners Listed Dog "All-American Dog/Mixed Breed." Variety, Breeder, Sire, Dam information shall remain blank for mixed breed entrants.

If this entry is for Junior Showmanship, please give the following information:

JUNIOR SHOWMANSHIP

JR.'S DATE OF BIRTH _____

AKC JUNIOR HANDLER NUMBER

--	--	--	--	--	--	--	--	--	--	--

The above number MUST be included. Should you not have your Junior Handler number, this may be obtained from the American Kennel Club. Phone: (919) 816-3776.

By signing the entry form I (we) certify that the Junior Showman does not now, and will not at any time, act as an agent/handler for pay while continuing to compete in Junior Showmanship.

ADDRESS _____

CITY _____ STATE _____ ZIP _____

☐ If Junior Handler is not the owner of the dog identified on the face of this form, what is the relationship of the Junior Handler to the Owner?
