

PREMIUM LIST

CALIFORNIA'S COOLEST CLUSTER

JULY 5, 6, 7, 2013

VENTURA, CALIFORNIA

Channel City Kennel Club

(This club will accept All-American/Mixed Breeds enrolled in the AKC Canine Partners Program)

Santa Maria Kennel Club

(This club will NOT accept All-American/Mixed Breeds at their trials)

Ventura County Dog Fanciers Association

(This club will accept All-American/Mixed Breeds enrolled in the AKC Canine Partners Program)

Close of Entries: Noon Wednesday, June 19, 2013 PT

IMPORTANT NOTICE

Mail Entries with Fees to Jack Bradshaw, Superintendent

P.O. Box 227303, Los Angeles, CA 90022

Make checks payable to Jack Bradshaw

FAX SERVICE: (323) 727-2949 E-MAIL ENTRIES: www.jbradshaw.com

\$4.00 per dog per show. \$2.00 per cancellation

There will be a \$4.00 convenience fee charged per dog per show when using a credit card for payment of hand delivered or mailed in entries. Fax machines are available 24 hours a day. Include Mastercard, Visa or American

Express number & expiration date Hand Deliveries – 5434 E. Olympic Boulevard, Los Angeles, CA 90022

All entries with fees must be in the office of the Superintendent not later than

NOON WEDNESDAY, JUNE 19, 2013 PDT

After which time no entries may be accepted, cancelled, changed, substituted, corrected, completed, or signed and no entry fees refunded. Any change or cancellation must be made in writing and received prior to closing, except as provided for in Chapter 11, Section 6 of the American Kennel Club Dog Show Rules.

Fax entries that are received incomplete or unable to read will not be accepted.

The proof of transmission is not proof for verifying faxed entries. PLEASE DO NOT WAIT UNTIL THE CLOSE OF ENTRY DAY TO FAX OR EMAIL YOUR ENTRIES. IF YOU FAX OR EMAIL ON A CLOSE OF ENTRY DAY, PLEASE SUBMIT PRIOR TO 9:00 AM.

SUMMERFEST COORDINATOR

Mrs. Laura Laschi, 1079 Avon Circle, Thousand Oaks, CA 91360

SPECIALTIES COORDINATOR

Mrs. Nancy Miller, 480 Reed Court, Goleta, CA 93117 (805) 968-0447

PUBLIC ADDRESS - Dick Vail

OFFICIAL PHOTOGRAPHERS - Kitten Rodwell Flashkatphotos@aol.com

Vicki Holloway Hollowayphoto@mac.com, Alan Merrigan info@simplyperfectimages.com

(Only official photographers will be allowed in the rings to take photos.)

VETERINARIAN IN ATTENDANCE - Randall Popkin, DVM (707) 495-6424

24 HR VETERINARY HOSPITALS - Veterinary Medical & Surgical Group, 2199 Sperry Ave, Ventura (805) 339-2290

Pet Emergency Clinic, 2301 South Victoria Avenue, Ventura (805) 642-8562

STROLLERS ARE NOT ALLOWED INSIDE THE BUILDINGS. NO TWO WHEEL VEHICLES ALLOWED.

NO ROLLER BLADES, ROLLER SHOES (WHEELIES) OR SKATE BOARDS

Note: Two wheel vehicles do not qualify as a disabled person's vehicle

ENTRY FEES

First entry of a dog	\$32.00
Each additional entry of the same dog	\$20.00
Puppy Class (6-9) (9-12), Bred by Exhibitor	\$20.00
Junior Showmanship	\$15.00
Cocker Spaniel Sweepstakes (Friday)	\$10.00
Weimaraner Maturity/Futurity (Friday)	\$30.00
Papillon Sweepstakes (Saturday)	\$15.00
Bulldog Sweepstakes (Saturday)	\$15.00
Standard Schnauzer Sweepstakes and Veteran Sweepstakes (Sunday)	\$20.00
Elkhound Sweepstakes and Veteran Sweepstakes (Sunday)	\$15.00

RAMP - At the discretion of the judge, the following breeds may be judged on a ramp: Clumber Spaniels, Field Spaniels, Sussex Spaniels, Welsh Springer Spaniels, Norwegian Buhund, Irish Terriers, Kerry Blue Terriers, Soft Coated Wheaten Terriers, Staffordshire Bull Terriers, Chinese Shar-Pei, Chow Chows, Keeshonden, and Polish Lowland Sheepdogs. Whippets may be judged on the ground, table or ramp. Basset Hounds and Bulldogs are expected to be judged on a ramp. Boykin Spaniels may be judged on a ramp or table. For the judging of juniors the ramp may be used at the discretion of the judge for the ramp breeds. Ramps may be used in emergency situations to judge any breed. (In all but emergency situations, the exhibitor has no recourse. In an emergency situation, where use of a ramp is not indicated in the premium list, an exhibitor has the option of withdrawing their entry and receiving a refund.) 5/1/13

NOTE: Exhibitors should follow their veterinarians' recommendation to assure their dogs are free of internal and external parasites, any communicable diseases, and have appropriate vaccinations.

Superintendents

Jack Bradshaw Dog Show Superintendents/Est. 1898

Post Office Box 227303, Los Angeles, California 90022

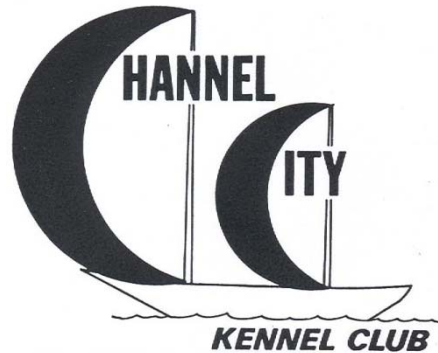
Telephone: (323) 727-0136; FAX: (323) 727-2949; WEB: www.jbradshaw.com

Jack Bradshaw / Marion Bradshaw / Barbara Bradshaw / Susan Bradshaw MacLyman

Julie Bradshaw Draper / John Bradshaw / Eloise O'Donnell / Cindy Marshall/Keith MacLyman

One or more of the above superintendents will attend the show

**47th ALL BREED DOG SHOW, OBEDIENCE AND RALLY TRIALS
of the**



CHANNEL CITY KENNEL CLUB, INC.

(Member of the American Kennel Club)

**Seaside Park/Ventura County Fairgrounds
Harbor Boulevard and Figueroa Street
Ventura, California**

FRIDAY, JULY 5, 2013

JUDGING WILL BE INDOORS/OUTDOORS

THIS EVENT IS ACCEPTING ALL-AMERICAN/MIXED BREED ENTRIES FOR OBEDIENCE AND RALLY

Unbenched

Show and Trial Hours: 7 a.m. to 8 p.m.

SPECIALTY WITHOUT SWEEPSTAKES

Bearded Collie Club of Southern California

SPECIALTY AND SWEEPSTAKES

Cocker Spaniel Club of Southern California

SUPPORTED ENTRIES with MATURITY AND FUTURITY

Southland Weimaraner Club

SUPPORTED ENTRIES

English Cocker Spaniel Club of Southern California

Norwegian Elkhound Association of Southern California

Southern California Alaskan Malamute Club

Boxer Club of San Fernando Valley

San Fernando Valley Doberman Pinscher Club

Dogue de Bordeaux Society of America

Standard Schnauzer Club of Southern California

Chinese Crested Club of Greater Los Angeles

Papillon Club of America

Bulldog Club of America, Division III

Golden State Chinese Shar Pei Club

Poodle Club of Southern California



**AMERICAN
KENNEL CLUB™**

CERTIFICATION

Permission has been granted by the American Kennel Club for the holding of this event under American Kennel Club rules and regulations.

James P. Crowley, Secretary

OFFICERS

Ms. Janet Vining Mitchell President
Ms. Sally Mobraaten 1st Vice President
Mrs. Susan Aguilar 2nd Vice President
Mr. Sam Hartline Treasurer
Ms. Pearl Solomon Recording Secretary
Ms. Merrillee Ford Corresponding Secretary

P.O. Box 6011, Santa Barbara, CA 93160-6011

DIRECTORS

Ms. Jean Avrick and Ms. Sarah Kvaas

DELEGATE TO THE AMERICAN KENNEL CLUB

Mrs. Claire "Kitty" Steidel

SHOW COMMITTEE

Ms. Janet Vining Mitchell Show Chairman
P. O. Box 5323, Santa Barbara, CA 93150 (805) 962-7419

Ms. Merrillee Ford Asst. Show Chairperson
Mr. William Iwamoto Obedience Chairman
Mrs. Susan Aguilar Asst. Obedience Chairperson
and all Officers and Directors of the Club

COMMITTEE CHAIRPERSONS

Advertising & Publicity Ms. Jean Avrick
Catalog Sales Ms. Pearl Solomon
Decorations Mr. Sam Hartline & Ms. Merrillee Ford
Equipment, Grounds & Safety Mr. William Iwamoto
Event Committee Mr. Sam Hartline
Hospitality – Judges Luncheon Sara Kvaas
Hospitality – Judges Breakfast Ms. Merrillee Ford & Ms. Janet Vining Mitchell
Hospitality-Exhibitors Ms. Pearl Solomon
Hospitality – Ring Service Ms. Pearl Solomon
Parking and Safety Mr. Sam Hartline
Public Education Mr. Tom Freeman
Trophies Ms. Merrillee Ford

SHOW OFFICIALS

Chief Ring Steward – Mr. John R. Shoemaker
Chief Obedience Steward – Ms. Allison K. Iwamoto

Cluster Judges Hospitality – Ms. Peri Norman
Cluster Specialty Coordinator – Mrs. Nancy Miller

VETERINARIAN IN ATTENDANCE

Dr. Randall Popkin
604 Elsa Drive, Santa Rosa, CA 95407 (707) 495-6424

Exhibitors should follow their veterinarians' recommendation to assure their dogs are free of internal and external parasites, any communicable diseases, and have appropriate vaccinations.

NO DOG OWNED OR CO-OWNED BY THE CHANNEL CITY KENNEL CLUB PRESIDENT OR SHOW CHAIR WILL BE ELIGIBLE FOR ENTRY AT THIS SHOW.

Channel City Kennel Club is a non-profit organization.

We are proud to have contributed to the following organizations:

Santa Barbara Humane Society (Williams Fund for Spay/Neuter)

Dos Pueblos High School Leadership Council

Santa Barbara Police Department, K-9 Fund

Santa Barbara County Sheriff's Department, K-9 Fund

Santa Barbara County Search and Rescue Canine Team

Girsh Park Foundation

Guide Dogs for the Blind Santa Barbara County

C.A.R.E. 4 PAWS

Goleta Public Library (children's books)

National Disaster Search Dog Foundation

TROPHIES

All trophies must be claimed the day of the show; none will be mailed. Channel City Kennel Club wishes to express its sincere thanks to the many members and friends who donated so generously to the Trophy Fund.

BEST IN SHOW & VARIETY GROUP PRIZES

Best in Show will be awarded an 18 inch Art by Henri, Inc. handcrafted Lucite sculpture sponsored by Channel City Kennel Club.

First in each Group will be awarded a 14 inch Art by Henri, Inc. handcrafted Lucite sculpture sponsored by the following donors:

SPORTING GROUP: Janet Vining Mitchell

The Jan Fowler Challenge Trophy

The Club offers a 12 inch Revere gold-toned bowl on a walnut stand in memory of Jan Fowler for first in the Sporting Group. For permanent possession, the Challenge Trophy must be won three (3) times by the same owner, not necessarily with the same dog, nor at consecutive shows. The year, name of the winning dog, and name of the dog's owners will be suitably engraved on the trophy, which will remain in the custody of the Club until retired.

HOUND GROUP: Kitty Steidel

The Clay Tedeschi Challenge Trophy

For first in the Hound Group sponsored by Clay Tedeschi, a 10 inch Gorham silver bowl on a walnut stand. For permanent possession, the Challenge Trophy must be won three (3) times by the same owner, not necessarily with the same dog, nor at consecutive shows. The year, name of the winning dog and the name of the dog's owners will be suitably engraved on the trophy, which will remain in the custody of the Club until retired.

WORKING GROUP: Pearl Solomon

The Catherine Walsh Challenge Trophy

For first in the Working Group sponsored by Pearl Solomon, a 12 x 9 inch Dannyquest Designs bronze Doberman Pinscher statue on a cherry wood base. For permanent possession, the Challenge Trophy must be won three (3) times by the same owner, not necessarily with the same dog, nor at consecutive shows. The year, name of the winning dog and the name of the dog's owners will be suitably engraved on the trophy, which will remain in the custody of the Club until retired.

The Scrapper Challenge Trophy

For first in the Working Group, sponsored by Pearl Solomon in memory of Catherine Walsh, a 10 inch engraved Crystal Bowl. For permanent possession, the Challenge Trophy must be won three (3) times by the same owner, not necessarily with the same dog, nor at consecutive shows. The year, name of the winning dog and the name of the dog's owners will be suitably engraved on the trophy, which will remain in the custody of the Club until retired.

TERRIER GROUP: Nancy and Bob Miller

The Mary Ostrand Challenge Trophy

For the first in the Terrier Group sponsored by the Channel City Kennel Club in memory of Mary Ostrand, a Dannyquest Designs bronze Dandie Dinmont Terrier statue on a walnut base. For permanent possession, the Challenge Trophy must be won three (3) times by the same owner, not necessarily with the same dog, nor at consecutive shows. The year, name of the winning dog and the name of the dog's owner will be suitably engraved on the trophy, which will remain in the custody of the Club until retired.

TOY GROUP: Channel City Kennel Club

The Rita Harrington Challenge Trophy

For the first in the Toy Group sponsored by Rita Harrington, an etched glass trophy by Madeline Patterson. For permanent possession the Challenge Trophy must be won three (3) times by the same owner, not necessarily with the same dog, nor at consecutive shows. The year, name of the winning dog and the name of the dog's owners will be suitably engraved on the trophy, which will remain in the custody of the Club until retired.

NON-SPORTING GROUP: Channel City Kennel Club

HERDING GROUP: Channel City Kennel Club
The Mortimer L. Glick Challenge Trophy

For first in the Herding Group, sponsored by Channel City Kennel Club in memory of Mortimer L. Glick, a 12 inch Revere gold-toned bowl on a walnut stand. For permanent possession the Challenge Trophy must be won three (3) times by the same owner, not necessarily with the same dog nor at consecutive shows. The year, name of the winning dog, and name of the dog's owners will be suitably engraved on the trophy, which will remain in the custody of the Club until retired.

BREED TROPHIES

The Best of Breed (Variety) and Best of Opposite Sex to Best of Breed (Variety) listed below will be awarded a 6 inch Art by Henri, Inc. handcrafted Lucite sculpture. Channel City Kennel Club thanks these sponsors for supporting our 2013 Show. All trophies not awarded at this show will revert to the Club's General Fund. The Best of Breed (Variety) and Best of Opposite Sex to Best of Breed (Variety) listed in the catalog will be presented with a trophy card in the ring. Trophies must be claimed at the trophy/catalog table by 4 p.m.

SPORTING BREEDS

COCKER SPANIELS - The Cocker Spaniel Club of Southern California will consider the classes at this show as its Designated Specialty and offers a Sweepstakes.

OFFICERS

President.....Celyn Van Leeuwen
Vice President Carl J. Anderson
Treasurer Jane Wade
SecretaryCelyn Van Leeuwen

PO Box 1111, Wildomar, CA 92595

TROPHIES: Stained Glass Canine related Artwork will be offered for Best of Variety for all three Varieties donated by William & Diane Burke of Cutlass Cockers, Best of Opposite Sex all three Varieties by Pamela Bagley of Icon Cockers, Best of Winners for all three Varieties donated by Alan Ormsby, Winners Dog for all three Varieties donated by William & Diane Burke of Cutlass Cockers & Pamela Bagley of Icon Cockers, and Winners Bitch for all three Varieties donated by Sharon Palmer of Icon Cockers.

Channel City Kennel Club offers rosettes for Best of Variety, Best of Winners, Best of Opposite Sex, Select Dog, Select Bitch, Winners Dog and Winners Bitch.

PUPPY SWEEPSTAKES

Judge: Mr. James Wade, P. O. Box 1715, Lucerne Valley, CA 92356

Entry Fee: \$10.00

1. To stimulate interest in showing promising Cocker Spaniel puppies, a Puppy Sweepstakes shall be held in conjunction with, and as a special class of, the Club's Summer Specialty Show. The Puppy Sweepstakes is not limited to members of the Club, but is open to all exhibitors of purebred Cocker Spaniels.
2. Puppies shall be divided in age groups of 6 to 9 months, and 9 to 12 months, divided by sex and variety.
3. Entry fees for the Puppy Sweepstakes shall be set by the Club and entry monies received shall be distributed as follows, after the club has deducted 25% to defray expenses: Best in Sweepstakes – 25%; Best of Opposite Sex to Best in Sweepstakes – 15%; Best of Variety in Sweepstakes – 15%; Best of Opposite Sex to Best of Variety in Sweepstakes – 5%.
4. If any prize monies are not awarded for any reason, they shall revert to the club.
5. All puppies entered in the Puppy Sweepstakes must be eligible for and entered in a regular class of the show.
6. The entry for each puppy entered in the Puppy Sweepstakes must accompany the regular class entry, stating "Puppy Sweepstakes" and stating variety, sex, age and class division in the Additional Class space on the regular entry form.

Canine Stuffed Animal Toys will be offered for Best of Variety and Best of Opposite Sex all three Varieties donated by the Cocker Spaniel Club of Southern California.

Channel City Kennel Club offers rosettes for Best of Variety In Sweepstakes(3), BOS Variety in Sweepstakes (3), Best In Sweepstakes (1), BOS In Sweepstakes (1).

ENGLISH COCKER SPANIELS –The English Cocker Spaniel Club of Southern California will support the entry of English Cocker Spaniels at this show and offers trophies with an English Cocker Spaniel theme for Best of Breed, Best of Opposite Sex, Best of Winners, Winners Dog and Winners Bitch. Channel City Kennel Club offers rosettes for Best of Breed, Best of Winners, Best of Opposite Sex, Select Dog, Select Bitch, Winners Dog and Winners Bitch, Select Dog and Select Bitch.

LABRADOR RETRIEVERS—Best of Breed: Victoria Stone, Bridgeport Labradors

WEIMARANERS – The Southland Weimaraner Club will support the entry of Weimaraners at this show. Valmar Kennels offers dog-related items for Best of Breed, Best of Opposite Sex, Winners Dog and Winners Bitch. Channel City Kennel Club offers rosettes for Best of Breed, Best of Winners, Best of Opposite Sex, Select Dog, Select Bitch, Winners Dog and Winners Bitch.

WEIMARANER CLUB OF AMERICA

WESTERN FUTURITY

Friday, July 5, 2013

The Western Section of the Weimaraner Club of America's 2013 Show Futurity will be judged at this show. All dogs/bitches entered in the Futurity must be entered in one of the regular or non-regular conformation classes of the Channel City Kennel Club Show on Friday, July 5, 2013. A \$30.00 entry fee is required to enter the Futurity after the dog/bitch has been properly entered in one of the regular or non-regular conformation classes.

Notice: all entries must comply with the rules governing the WCA's Show Futurity. Exhibitor is solely responsible for knowledge of and compliance with those rules.

Classification

Senior Dog/Bitch - Born on or after June 1, 2011 through September 30, 2011

Intermediate Dog/Bitch - Born on or after October 1, 2011 through Jan. 31, 2012

Junior Dog/Bitch - Born on or after February 1, 2012 through May 31, 2012

The order of judging will be: Junior Dog, Intermediate Dog, Senior Dog, Best Dog in Futurity. Junior Bitch, Intermediate Bitch, Senior Bitch, Best Bitch in Futurity. After the judging of Best Bitch in Futurity, the Best Dog and Best Bitch will enter the ring together with no further judging to take place. Both winners will share equally in the honors and awards.

The Weimaraner Club of America offers the following prizes:

Owner of the sire and the breeder of the Best Dog in Futurity and Best Bitch in Futurity will each receive a Breed Figure on a walnut base.

The breeder of the Best Dog in Futurity and Best Bitch in Futurity will each receive a check for \$100.00 in the mail.

Owner of Best Dog in Futurity and Best Bitch in Futurity will each receive a plaque.

Medallions will be awarded for first, second, third and fourth placement in each class.

Rosettes: The Weimaraner Club of America offers Rosettes for first, second, third and fourth placement in each class as well as for the Best Dog in Futurity and Best Bitch in Futurity.

WEIMARANER CLUB OF AMERICA

WESTERN MATURITY

Friday, July 5, 2013

The Western Section of the Weimaraner Club of America's 2013 Show Maturity will be judged at this show. All dogs/bitches entered in the Maturity must have been eligible for a Futurity event and must be entered in one of the regular or non-regular conformation classes of the Channel City Kennel Club Show on Friday, July 5, 2013. A \$30.00 entry fee is required to enter the Maturity after the dog/bitch has been properly entered in one of the Specialty Classes.

Notice: all entries must comply with the rules governing the WCA's Show Maturity. Exhibitor is solely responsible for knowledge of and compliance with those rules.

Classification

Maturity Dog/Bitch - Born on or after June 1, 2010 through May 31, 2011.

Classes will be divided by sex only.

Placement will be first, second, third and fourth. First place dog will be Best Dog in Maturity. First place bitch will be Best Bitch in Maturity. After the judging of Dogs and Bitches is complete, the best Dog and Best Bitch will enter the ring together with no further judging to take place. Both Winners will share equally in the honors and awards.

The Weimaraner Club of America offers the following prizes:

Owner of the sire and the breeder of the Best Dog in Maturity and Best Bitch in Maturity will each receive a Breed Figure on a walnut base.

The breeder of the Best Dog in Maturity and Best Bitch in Maturity will each receive a check for \$100.00 in the mail.

Owner of Best Dog in Maturity and Best Bitch in Maturity will each receive a plaque.

Medallions: will be offered for first, second, third and fourth placement in each class.

Rosettes: The Weimaraner Club of America offers Rosettes for first, second, third and fourth placement in each class as well as for the Best Dog in Maturity and Best Bitch in Maturity.

HOUND BREEDS

NORWEGIAN ELKHOUNDS- The Norwegian Elkhound Association of Southern California will support

the entry of Norwegian Elkhounds at this show and offers Garden Art for Best of Breed, Best of Opposite Sex and Best of Winners. Channel City Kennel Club offers rosettes for Best of Breed, Best of Opposite Sex, Best of Winners, Winners Dog, Winners Bitch, Select Dog and Select Bitch.

WORKING BREEDS

ALASKAN MALAMUTES –The Southern California Alaskan Malamute Club will support the entry of Alaskan Malamutes at this show and offers trophies of an arctic theme for Best of Breed, Best of Opposite Sex, Best of Winners, Winners Dog and Winners Bitch. Channel City Kennel Club offers rosettes for Best of Breed, Best of Winners, Best of Opposite Sex, Select Dog, Select Bitch, Winners Dog and Winners Bitch.

BOXERS – The Boxer Club of San Fernando Valley will support the entry of Boxers at this show and offers Boxer Memorabilia for Best of Breed, Best of Opposite Sex, Best of Winners, Winners Dog and Winners Bitch, and high scoring Boxer in Obedience. Channel City Kennel Club offers rosettes for Best of Breed, Best of Winners, Best of Opposite Sex, Select Dog, Select Bitch, Winners Dog and Winners Bitch.

DOBERMAN PINSCHER–The San Fernando Doberman Pinscher Club will support the entries at this show and offers a trophy for Best of Breed. Channel City Kennel Club offers rosettes for Best of Breed, Best of Winners, Best of Opposite Sex, Select Dog, Select Bitch, Winners Dog and Winners Bitch.

DOGUE DE BORDEAUX–The Dogue de Bordeaux Society of America will support the entries of Dogue de Bordeaux at this show and offers Embroidered Caps donated by Trojans Bordeaux for Best of Breed, Best of Opposite Sex, Winners Dog, and Winners Bitch, Select Dog, Select Bitch, and a Stein for Best of Winners. Channel City Kennel Club offers rosettes for Best of Breed, Best of Winners, Best of Opposite Sex, Select Dog, Select Bitch, Winners Dog and Winners Bitch.

GREAT DANES–Best of Breed: Lorraine McBurnie

STANDARD SCHNAUZER–The Standard Schnauzer Club of Southern California will support the entry of Standard Schnauzers at this show and offers a metal and enameled serving tray for Best of Breed; Metal and enameled serving utensils for Best Opposite Sex; a metal and enameled serving tray for Winner's Dog, and a metal and enameled serving tray for Winner's Bitch. Channel City Kennel Club offers rosettes for Best of Breed, Best of Winners, Best of Opposite Sex, Select Dog, Select Bitch, Winners Dog and Winners Bitch

TERRIER BREEDS

CAIRN TERRIERS – Best of Breed and Best of Opposite Sex: Bob and Nancy Miller.

SOFT COATED WHEATEN TERRIER – Best of Breed: Merrilee Ford

TOY BREEDS

CHINESE CRESTED – The Chinese Crested Club of Greater Los Angeles will support the entry of Chinese Crested at this show and offers a Chinese Crested themed T-Shirt for Best of Breed, a Chinese Crested theme Tote bag for Best of Opposite Sex, and a limited edition Chinese Crested print for Best of Winners. Channel City Kennel Club offers rosettes for Best of Breed, Best of Winners, Best of Opposite Sex, Select Dog, Select Bitch, Winners Dog and Winners Bitch.

HAVANESE: Best of Breed and Best of Opposite Sex: Rita Harrington.

PAPILLONS– The Papillon Club of America, Southwest Regional Show Committee will offer a Kennel Bed for Best of Breed, a Plush Bed for Best of Opposite Sex and Best of Winners, a Crate Pad for Winners Dog, Winners Bitch, Select Dog, and Select Bitch. Channel City Kennel Club offers rosettes for Best of Breed, Best of Winners, Best of Opposite Sex, Select Dog, Select Bitch, Winners Dog and Winners Bitch.

NON-SPORTING BREEDS

BULLDOGS – The Bulldog Club of America, Division III will support the entry of Bulldogs at this show. Channel City Kennel Club offers rosettes for Best of Breed, Best of Winners, Best of Opposite Sex, Select Dog, Select Bitch, Winners Dog and Winners Bitch.

CHINESE SHAR PEI–The Golden State Chinese Shar Pei Club will support the entry of Chinese Shar Peis at this show. Channel City Kennel Club offers rosettes for Best of Breed, Best of Winners, Best of Opposite Sex, Select Dog, Select Bitch, Winners Dog and Winners Bitch.

DALMATIAN – Susie Hannum in memory of CH Spotsalot Hiway Trooper, CGC

POODLES – The Poodle Club of Southern California will support the entry of Poodles at this show. Channel City Kennel Club offers rosettes for Best of Breed, Best of Winners, Best of Opposite Sex, Select Dog, Select Bitch, Winners Dog and Winners Bitch.

HERDING BREEDS

BEARDED COLLIES – The Bearded Collie Club of Southern California will consider the classes at this show as its Designated Specialty.

OFFICERS

President:Susann Brody
Vice President:Sandy Dubin
Treasurer:Cathy McLaren
Secretary:Karen Dressler
c/o Susann Brody, 23442 Hatteras Street, Woodland Hills, CA 91367

The Bearded Collie Club of Southern California offers a Picnic Basket for Best of Breed, and a Challenge Trophy with a bronze bearded collie mounted on a wooden base; for permanent possession the Challenge Trophy must be won three times by the same owner, not necessarily with the same dog nor at consecutive shows. The year, name of the winning dog, and name of the dog's owners will be suitably engraved on the trophy, which will remain in the custody of the Club until retired.

For Best Opposite Sex, a Brush with painted Bearded Collie, and a Challenge Trophy with a bronze bearded collie mounted on a wooden base; for permanent possession the Challenge Trophy must be won three times by the same owner, not necessarily with the same dog nor at consecutive shows. The year, name of the winning dog, and name of the dog's owners will be suitably engraved on the trophy, which will remain in the custody of the Club until retired.

For Best of Winners, a Picture Frame with a painted Bearded Collie, and a Challenge Trophy with a bronze bearded collie mounted on a wooden base; for permanent possession the Challenge Trophy must be won three times by the same owner, not necessarily with the same dog nor at consecutive shows. The year, name of the winning dog, and name of the dog's owners will be suitably engraved on the trophy, which will remain in the custody of the Club until retired.

For Winners Dog and Winners Bitch Brushes with painted Bearded Collie.

Channel City Kennel Club offers rosettes for Best of Breed, Best of Winners, Best of Opposite Sex, Select Dog, Select Bitch, Winners Dog and Winners Bitch.

BELGIAN TERVUREN – Best of Breed and Best of Opposite Sex: Penny Gott and Tom Freeman

COLLIES (SMOOTH) – Best of Variety: Sally Mobraaten, Sealoch Collies

SHETLAND SHEEPDOG-Best of Breed: Barbara Stephenson

JUNIOR SHOWMANSHIP TROPHIES

Best Junior Handler will be awarded a gift certificate sponsored by Virginia Faber

1st in each class-Club Medallion sponsored by Virginia Faber

The Store4Dogs offers a \$10 gift card for TheStore4Dogs to first in each class

OBEDIENCE TROPHIES

Qualifying scores required for all prizes. All dogs with qualifying scores will be awarded a dark green ribbon. Dogs completing titles will be awarded a Channel City Kennel Club Medallion. These are sponsored by Channel City Kennel Club, Inc.

HIGH SCORING DOG IN TRIAL will be awarded a 14 inch Art By Henri, Inc. handcrafted Lucite sculpture sponsored by Channel City Kennel Club, Inc.

BETTY AND CURTIS CUNNINGHAM HIGH SCORING DOG IN TRIAL CHALLENGE TROPHY: Offered by Betty and Curtis Cunningham, a 12 inch Revere gold-toned bowl on a walnut stand. For permanent possession, the Challenge Trophy must be won three times by the same owner, not necessarily with the same dog nor at consecutive shows. The year, name of winning dog, and name of winning dog's owners will be suitably engraved on the trophy, which will remain in the custody of the Club until retired.

HIGH COMBINED SCORE IN OPEN B AND UTILITY Will be awarded an 11 inch Art by Henri, Inc. hand-crafted Lucite sculpture sponsored by Naoma Ford.

LOUISE FOX MEREDITH HIGH COMBINED CHALLENGE TROPHY: Offered by Louise Fox Meredith, an 11 x 6" Dannyquest Designs bronze German Shepherd Dog, mounted on a cherry wood base. For permanent possession, the Challenge Trophy must be won three times by the same owner, not necessarily with the same dog nor at consecutive shows. The year, name of winning dog and name of dog's owners will be suitably engraved on the trophy, which will remain in the custody of the Club until retired.

HIGH SCORING TROPHIES – Channel City Kennel Club-High Scoring Dog in a specific classification or breed will be awarded a 6 inch Art By Henri, Inc. hand-crafted Lucite sculpture, sponsored by the following donors:

HIGH SCORING BORDER COLLIE – Bill and Julie Iwamoto

HIGH SCORING BOXER-The Boxer Club of San Fernando Valley will offer Boxer memorabilia

HIGH SCORING COLLIE- Sally Mobraaten, Sealoch Collies.

HIGH SCORING DALMATIAN- Susie Hannum in memory of Fina's Culinary Journey, CDX, RX

HIGH SCORING LABRADOR RETRIEVER—Victoria Stone, Bridgeport Labradors

HIGH SCORING PAPILLON- The Papillon Club of America, Southwest Regional Show Committee will offer a Kennel Bed

HIGH SCORING POODLE Janet Bourque

HIGH SCORING STANDARD SCHNAUZER-The Standard Schnauzer Club of Southern California will offer a Wrought Iron leash holder

HIGH SCORING SHETLAND SHEEPDOG- Barbara Stephenson

HIGH SCORING DOG FROM SANTA BARBARA COUNTY-Allison Iwamoto

HIGHEST SCORING FIRST TIME ENTRY IN UTILITY A WITH QUALIFYING SCORE-Susan Aguilar in memory of Souveniers Pocket Rocket, UD

NOVICE A- Channel City Kennel Club

NOVICE B –.Sally Mobraaten, Sealoch Collies

OPEN A – Channel City Kennel Club

OPEN B- Channel City Kennel Club.

UTILITY A- Channel City Kennel Club

UTILITY B - Channel City Kennel Club.

UTILITY DOG EXCELLENT – Channel City Kennel Club.

BEGINNING NOVICE A- Channel City Kennel Club.

BEGINNING NOVICE B- Channel City Kennel Club.

RALLY TROPHIES

Qualifying scores required for all prizes. All dogs with qualifying scores will be awarded a dark green ribbon. Dogs completing titles will be awarded a Channel City Kennel Club medallion. These are sponsored by the Channel City Kennel Club.

Friday
Channel City Kennel Club



PRO PLAN®
brand DOG FOOD

FUEL THE CHAMPION WITHIN®

Best in Show

-Three (3) large bags of any Pro Plan dog food

Group First Winners (7)

-One (1) large bag of any Pro Plan dog food

High in Trial

-2 Pro Plan Grooming Towels & Barrel Bag offered by Pro Plan

Best Junior Handler

-2 Pro Plan Grooming Towels & Barrel Bag offered by Pro Plan

Winners Dog & Winners Bitch Class Winner

-Product and/or gift valued at more than \$5.00 from Pro Plan

ALL AWARDS, IF NOT PRESENTED IN THE RING, MUST BE PICKED UP DURING THE EVENT AT THE PURINA BOOTH. PRESENTATION OF THE WINNING RIBBON IS REQUIRED. PURINA RESERVES THE RIGHT TO MAKE AWARD SUBSTITUTIONS OF EQUAL OR GREATER VALUE IF LISTED AWARD IS NOT AVAILABLE.

72nd All Breed Dog Show, Obedience Trial and Rally Trial of the



SANTA MARIA KENNEL CLUB, INC.

WWW.SANTAMARIAKENNELCLUB.ORG

(Member of the American Kennel Club)

**Seaside Park/Ventura County Fairgrounds
Harbor Boulevard and Figueroa Street
Ventura, California**

THIS SHOW IS NOT ACCEPTING ENTRIES FOR MIXED BREEDS IN OBEDIENCE

SATURDAY, JULY 6, 2013

Judging will be indoors and outdoors

Unbenched / Show and Trial Hours: 7 a.m. to 8 p.m.

SUPPORTED ENTRY AND SWEEPSTAKES

Papillon Club of America, Southwest Regional
Bulldog Club of America, Division III

SUPPORTED ENTRIES

Cocker Spaniel Club of Southern California
English Cocker Spaniel Club of America
Southland Weimaraner Club
Norwegian Elkhound Association of Southern CA
Southern California Alaskan Malamute Club
Boxer Club of San Fernando Valley
San Fernando Valley Doberman Pinscher Club
Dogue de Bordeaux Society of America
Standard Schnauzer Club of Southern California
Chinese Crested Club of Greater Los Angeles
Golden Gate State Chinese Shar Pei Club
Poodle Club of Southern California
Bearded Collie Club of Southern California



**AMERICAN
KENNEL CLUB™**

CERTIFICATION

Permission has been granted by the American Kennel Club for the holding of this event under American Kennel Club rules and regulations.

James P. Crowley, Secretary

OFFICERS

Mr. Dave SwinsonPresident
Mrs. Anita Forde..... Vice-President
Mrs. Judy Bein..... Treasurer
Ms. Sharon Palmer.....Corresponding/Recording Secretary

4611Kenneth Ave., Santa Maria, CA 93455
DOGSports@SANTAMARIAKENNELCLUB.ORG

DIRECTORS

Ms. Naia Libeu, Ms. Pam Bagley, Mrs. Tracy Swinson

DELEGATE TO THE AMERICAN KENNEL CLUB

Mr. Laurence J. Libeu

EVENT COMMITTEE

All officers of the SMKc

SHOW COMMITTEE

Mrs. Tracy L. Swinson Show Chairperson

4611Kenneth Ave., Santa Maria, CA 93455
(805)345-9809, littlebluedogs@verizon.net

Ms. Pam Bagley Assistant Show Chairperson
Mrs. Sue Meile..... Obedience & Rally Chairperson
Mrs. Naia Libeu Trophy Chairperson
Mr. Scott Meile & Mr. Dave Swinson..... Parking Coordinator
Mr. Scott Meile & Mr. Dave Swinson..... Grounds Chairman
Mrs. Anita Forde Judges Hospitality
Ms. Pam Bagley Summerfest Judges Gifts
Ms. Peggie Bourdon..... Ring Hospitality
Ms. Sharon Palmer..... Catalog Chairperson
Mrs. Judy Bein & Mrs. Anita Forde Day of Show Lunch
Mrs. Judy Bein & Mrs. Anita Forde Show Dinner Co-Chairpersons
Mrs. Sue Meile..... Public Education Chairperson
Mr. Dave Swinson Emergency Coordinator

CHIEF STEWARD

Mr. John R. Shoemaker

VETERINARIAN IN ATTENDANCE

Dr. Randall Popkin
604 Elsa Drive, Santa Rosa, CA 95407 (707) 545-7387

Exhibitors should follow their veterinarians' recommendation to assure their dogs are free of internal and external parasites, any communicable diseases, and have appropriate vaccinations.

NO DOG OWNED OR CO-OWNED BY ANY OFFICER, DIRECTOR OR MEMBER OF THE SHOW COMMITTEE OF THIS CLUB WILL BE ELIGIBLE FOR ENTRY AT THIS SHOW.

The Santa Maria Kennel Club contributed to the following:

AKC Canine Health Foundation
Marian Extended Care Center
Santa Maria Police Dpt. – K9 Unit
Allan Hancock Scholarship Program

California Federation of Dog Clubs
Veterinary Scholarship Program
Search Dog Foundation

TROPHIES

All breed and obedience trophies awarded at this show will be offered by the Santa Maria Kennel Club unless otherwise noted. Best in Show and Group Trophies will be Pewter, Pewterex or Stainless Steel. The following are sponsored Group Trophies:

Sporting Group – Ms. Pam Bagley and Ms. Sharon Palmer
Hound Group – Ms. Judy Bein
Working Group – Ms. Susan Machado
Terrier Group – Ms. Peggie Bourdon
Toy Group – Mrs. Virginia Flatley
Non-Sporting Group – Mr. Dave and Mrs. Tracy Swinson
Herding Group – Mrs. Anita Forde

Santa Maria Kennel Club, Inc. offers a Trophy for Best of Breed or Variety of Breed in every breed and variety which has an entry of SIX or more. No Best of Breed or Variety of Breed trophies will be awarded in the ring. A card will be given to the handler of each breed dog winning a trophy. The trophy can be obtained at the Trophy Table next to the Catalog Table on the show grounds during show hours. No trophies will be mailed.

**BREED TROPHIES
SPORTING BREEDS**

COCKER SPANIELS - The Cocker Spaniel Club of Southern California will support the entry of Cocker Spaniels at this show. The Santa Maria Kennel Club offers rosettes for Best of Breed, Best of Winners, Best of Opposite Sex, Select Dog, Select Bitch, Winners Dog and Winners Bitch.

ENGLISH COCKER SPANIELS- The English Cocker Spaniel Club of Southern California will support the entry of English Cocker Spaniels at this show and offers trophies with an English Cocker Spaniel theme for Best of Breed, Best of Opposite Sex, Best of Winners, Winners Dog, Winners Bitch, Select Dog and Select Bitch. The Santa Maria Kennel Club offers rosettes for Best of Breed, Best of Opposite Sex, Best of Winners, Winners Dog, Select Dog and Select Bitch.

WEIMARANERS – The Southland Weimaraner Club will support the entry of Weimaraners at this show. Greyoaks Weimaraners offers Crystalware for Best of Breed, Best of Opposite Sex, Winners Dog and Winners Bitch. The Santa Maria Kennel Club offers rosettes for Best of Breed, Best of Opposite Sex, Best of Winners, Winners Dog, Winners Bitch, Select Dog and Select Bitch.

HOUND BREEDS

NORWEGIAN ELKHOUND - Norwegian Elkhound Association of Southern CA will support the entry of Norwegian Elkhounds at this show. The Santa Maria Kennel Club offers rosettes for Best of Breed, Best of Opposite Sex, Best of Winners, Winners Dog, Winners Bitch, Select Dog and Select Bitch.

WORKING BREEDS

ALASKAN MALAMUTES The Southern California Alaskan Malamute Club will support the entry of Alaskan Malamutes at this show and offers trophies of an Arctic theme for Best of Breed, Best of Opposite Sex, Best of Winners, Winners Dog and Winners Bitch. The Santa Maria Kennel Club offers rosettes for Best of Breed, Best of Opposite Sex, Best of Winners, Winners Dog, Winners Bitch, Select Dog and Select Bitch.

BOXERS The Boxer Club of San Fernando Valley will support the entry of Boxers at this show and offers Boxer Memorabilia for Best of Breed, Best of Opposite Sex, Best of Winners, Winners Dog, Winners Bitch and High Scoring Boxer in Obedience. The Santa Maria Kennel Club offers rosettes for Best of Breed, Best of Opposite Sex, Best of Winners, Winners Dog, Winners Bitch, Select Dog and Select Bitch.

DOBERMAN PINSCHER The San Fernando Doberman Pinscher Club will support the entry of Doberman Pinschers at this show and offers a trophy for Best of Breed. The Santa Maria Kennel Club offers rosettes for Best of Breed, Best of Opposite Sex, Best of Winners, Winners Dog, Winners Bitch, Select Dog and Select Bitch.

DOGUE DE BORDEAUX – The Dogue de Bordeaux Society of America will support the entry of Dogue de Bordeaux at this show and offer Cups for Best of Breed, Best of Opposite Sex, Winners Dog and Winners Bitch, donated by Dogue de Bordeaux Society of America and Steins for Best of Winners, Select

Dog and Select Bitch donated by Kym and Chris at Desert Dogues. The Santa Maria Kennel Club offers rosettes for Best of Breed, Best of Winners, Best of Opposite Sex, Select Dog, Select Bitch, Winners Dog and Winners Bitch.

STANDARD SCHNAUZER - The Standard Schnauzer Club of Southern California will support the entry of Standard Schnauzers at this show and offer a metal and enamel serving tray for Best of Breed, metal and enamel serving utensils for Best of Opposite Sex; a metal and enamel serving tray for Winners Dog and Winners Bitch. The Santa Maria Kennel Club offers rosettes for Best of Breed, Best of Opposite Sex, Best of Winners, Winners Dog, Winners Bitch, Select Dog and Select Bitch.

TOY BREEDS

CHINESE CRESTED The Chinese Crested Club of Greater Los Angeles will support the entry of Chinese Crested at this show and offers a Chinese Crested theme T-shirt for Best of Breed, a Chinese Crested theme Tote bag for Best of Opposite Sex and a limited edition Chinese Crested print for Best of Winners. Santa Maria Kennel Club offers rosettes for Best of Breed, Best of Opposite Sex, Best of Winners, Winners Dog, Winners Bitch, Select Dog and Select Bitch.

PAPILLON The Papillon Club of America will support the entry of Papillons at this show and offer medallions for Best of Breed, Best of Opposite Sex, Best of Winners, and High Scoring Papillon in Trial. The PCA, Southwest Regional show committee will offer a kennel bed for Best of Breed, High Scoring Papillon in Trial and Best in Sweeps. A plush bed for Best of Opposite Sex, Best of Winners, and BOS in Sweeps. A crate pad for Winners Dog, Winners Bitch, Select Dog, and Select Bitch. The Santa Maria Kennel Club offers rosettes for Best of Breed, Best of Winners, Best of Opposite Sex, Select Dog, Select Bitch, Winners Dog, and Winners Bitch. A Dog Toy is offered for First through Fourth in Sweepstakes Classes.

SWEEPSTAKES

Sweeps Judge: Michael J. "Mickey" Feigelson, 3332 Overton Rd., Birmingham, AL 35223

The Sweepstakes Classes are open to all Papillons who, on the day of the show, will be 6 months of age and under 18 months of age. Dogs shown in Sweepstakes must also be entered in a Regular Class with the regular entry fee and on the official entry form, shown as "Additional Classes."

Entry fee is \$15 per entry.

CLASSES (divided by sex): 6 & under 9 months; 9 & under 12 months; 12 & under 15 months; 15 & under 18 months.

Division of Prize Money:

After 35% is retained by the club to defray expenses, the remaining monies will be divided as follows: First-50%, Second-25%, Third-15%, and Fourth-10%

NON-SPORTING BREEDS

BULLDOG - The Bulldog Club of America, Division III supports the entry of Bulldogs at this show and offers trophies in a Bulldog motif for Best of Breed, Best of Opposite Sex and Best of Winners. The Santa Maria Kennel Club offers rosettes for Best of Breed, Best of Opposite Sex, Best of Winners, Winners Dog, Winners Bitch, Select Dog and Select Bitch.

SWEEPSTAKES

Sweeps Judge: Susan Guaroglia, P.O.Box 22, Kelseyville, CA 95451.

The Bulldog Club of America Division III offers rosettes for placements 1st – 4th of the Sweeps classes, Best in Sweepstakes and Best of Opposite Sex. The Sweepstakes classes are open to all dogs and bitches at least 6 and under 18 months of age on the day of the show. Champions of Record are not eligible. Professional handlers may show only dogs they own or co-own. Judging will be held before the Regular Classes. Each entry for the Sweepstakes must also be entered in a regular class at this show. Each entry is to indicate Sweepstakes (state which class) on a regular entry form in the space for Additional Classes.

Entry fee is \$15.00 per entry.

CLASSES (Divided by Sex): 6 & under 9 months, 9 & under 12 months, 12 & under 15 months; 15 & under 18 months.

DIVISION OF PRIZE MONEY – After deduction of 30% to defray the Sweepstakes expenses, the remainder shall be divided as follows in each class: 1st – 40%, 2nd – 30%, 3rd – 20%, 4th – 10%

CHINESE SHAR PEI - The Golden State Chinese Shar Pei Club will support the entry of Shar Peis at this show. The Santa Maria Kennel Club offers rosettes for Best of Breed, Best of Opposite Sex, Best of Winners, Winners Dog, Winners Bitch, Select Dog and Select Bitch.

POODLES – The Poodle Club of Southern California supports the entry of Poodles at this show. The Santa Maria Kennel Club offers rosettes for Best of Breed, Best of Opposite Sex, Best of Winners, Winners Dog, Winners Bitch, Select Dog and Select Bitch.

HERDING BREEDS

BEARDED COLLIES – The Bearded Collie Club of Southern California supports the entry of Bearded Collies at this show and offers the following trophies: Best of Breed - Hand Painted Dog Bowl, Best of Opposite Sex - Silver Beardie head on heart shaped wood, Best of Winners – Silver Beardie head on heart shaped wood, Winners Dog – Dog Leash, Winners Bitch – Dog Leash. The Santa Maria Kennel Club offers rosettes for Best of Breed, Best of Opposite Sex, Best of Winners, Winners Dog, Winners Bitch, Select Dog and Select Bitch.

JUNIOR SHOWMANSHIP

Best Junior Handler - The Santa Maria Kennel Club, Inc. offers a \$100 Gift Card.

First - Fourth place in all classes - The Santa Maria Kennel Club offers a pewterex or stainless steel trophy.

First place in all classes – A \$10 gift card for The Store 4 Dogs is donated by The Store 4 Dogs.

OBEDIENCE TROPHIES

Qualifying scores are required for all prizes. A Dark Green Ribbon will be awarded to each dog making a qualifying score.

The following are sponsored trophies:

High in Trial – Mr. Laurence Libeu

High Combined in Trial - Ms. Bette Clancy

Qualifying High Scoring Papillon in Trial - Kennel Bed offered by the Papillon Club of Southern California Southwest Region and a medallion offered by The Papillon Club of America

Qualifying High Scoring Standard Schnauzer - Glass Cookie Jar with Standard Schnauzer Puppy Etching offered by The Standard Schnauzer Club Of Southern California.

Qualifying High Scoring Boxer - Boxer Memorabilia offered by The Boxer Club of San Fernando Valley

Santa Maria Kennel Club, Inc. offers a Pewterex or stainless steel trophy for 1st-4th place in all obedience classes.

Obedience Trophy presentations will begin shortly after the last class has finished, with the exception of High In Trial and High Combined (Open B & Utility) in Trial, which will be presented in the Group Ring during the Group Judging. No trophies will be mailed.

RALLY TROPHIES

Qualifying scores are required for all prizes. A Dark Green Ribbon will be awarded to each dog making a qualifying score.

Saturday
Santa Maria Kennel Club



Best in Show

-Three (3) large bags of any Pro Plan dog food

Group First Winners (7)

-One (1) large bag of any Pro Plan dog food

High in Trial

-Rolling Duffle offered by Pro Plan

Best Junior Handler

-Rolling Duffle offered by Pro Plan

First in Bred-by-Exhibitor Dog & Bred-by-Exhibitor Bitch Class Winners

-Product and/or gift valued at more than \$5.00 from Pro Plan

ALL AWARDS, IF NOT PRESENTED IN THE RING, MUST BE PICKED UP DURING THE EVENT AT THE PURINA BOOTH. PRESENTATION OF THE WINNING RIBBON IS REQUIRED. PURINA RESERVES THE RIGHT TO MAKE AWARD SUBSTITUTIONS OF EQUAL OR GREATER VALUE IF LISTED AWARD IS NOT AVAILABLE. **

126th Unbenched All Breed Dog Show, Obedience and Rally Trials



VENTURA COUNTY DOG FANCIERS ASSOCIATION

(Member of the American Kennel Club)

**Seaside Park/Ventura County Fairgrounds
Harbor Boulevard and Figueroa Street
Ventura, California**

SUNDAY, JULY 7, 2013

JUDGING WILL BE INDOORS/OUTDOORS

THIS EVENT IS ACCEPTING ALL-AMERICAN/MIXED BREED ENTRIES FOR OBEDIENCE AND RALLY

Show Hours: 7 a.m. to 8 p.m.

SPECIALTY AND SWEEPSTAKES

Norwegian Elkhound Association of Southern California
Standard Schnauzer Club of Southern California

SUPPORTED ENTRIES

Cocker Spaniel Club of Southern California
English Cocker Spaniel Club of Southern California
Southland Weimaraner Club
Southern California Alaskan Malamute Club
Boxer Club of San Fernando Valley
San Fernando Valley Doberman Pinscher Club
Dogue de Bordeaux Society of America
Chinese Crested Club of Greater Los Angeles
Bearded Collie Club of Southern California
Bulldog Club of America, Division III
Golden State Chinese Shar Pei Club
Papillon Club of America, Southwest Region
Poodle Club of Southern California

CERTIFICATION



**AMERICAN
KENNEL CLUB™**

Permission has been granted by the American Kennel Club for the holding of this event under American Kennel Club rules and regulations.

James P. Crowley, Secretary

VENTURA COUNTY DOG FANCIERS ASSOCIATION OFFICERS

Mr. Jim Scott..... President
Mrs. Rhonda Todd Vice President
Mrs. Jan Jones Treasurer
Mrs. Donna Hollingsworth..... Recording Secretary
Ms. Celeste Mills Past President
Mrs. Maryann Welch Corresponding Secretary

11899 Koenigsten Rd. Santa Paula CA 93060 (tprio@verizon.net)

DIRECTORS

Mrs. Maria Bokron-Nowlin, Mrs. Beverly Halpin, Ms. Shirley Welch, Mrs. Laura Laschi
Ms. Peri Norman, Mrs. Linda Millstone

BENCH SHOW COMMITTEE

Ms. Celeste Mills Committee Member
Mrs. Donna Hollingsworth..... Committee Member
Mrs. Rhonda Todd Committee Member
Mr. Jim Scott..... Alternate

and the Officers and Directors of Ventura County Dog Fanciers Association

COMMITTEE CHAIRPERSONS

Show Chairperson..... email: Petlver@verizon.net..... Mrs. Laura Laschi
1079 Avon Circle, Thousand Oaks, CA 91360 (805-495-8925)
Assistant Show Chairperson..... email: PeriNorman@aol.com Ms. Peri Norman
Judges Committee Chairman email: partiCrasher@msn.com..... Mr. Carl Anderson
Obedience and Rally Chairperson..... Mrs. Beverly Halpin
Chief Obedience Ring Steward Mr. Bill Iwamoto
Vendors Ms. Laura Thomas

Assisted by Margaret Hodge, John Thomas and Diane Thomas

Publicity Mrs. Marianne Caprino
Catalog Advertising Mr. Tommy Dickey
Catalog Sales & Information Mrs. Michele Flickinger
Judges' Transportation..... Mrs. Rhonda Todd
Club Hospitality (day of show) Mrs. Michele Flickinger
Judges' & Club Lunch Mrs. Shirley Dumas
Trophies..... Mrs. Maria Bokron-Nowlin
Club Workers Coordinator Mrs. Shirley Dumas
Grounds..... Ms. Susan Jensen
Parking..... Mr. Larry Flickinger
Emergency Coordinator Mrs. Connie Brown, Mr. Jim Scott
Ring Services Ms. Maxine Pauling
Public Education..... Ms. Carolyn Bernard
Judges Welcome Reception Mrs. Mary Ann Welch, Ms. Shirley Welch

DELEGATE TO THE AMERICAN KENNEL CLUB

Mr. William Dumas

PUBLIC ADDRESS SYSTEM - Dick Vail

CHIEF RING STEWARD - Mr. Joe Majzel

VETERINARIAN IN ATTENDANCE

Dr. Randall Popkin

604 Elsa Drive, Santa Rosa, CA 95407 (707) 495-6424

VETERINARIAN ON CALL - Ventura Medical & Surgical Group

(805) 339-2290 2199 Sperry Ave., Ventura, CA 93003

Directions: Merge onto US 101 South from Harbor Blvd. exit Victoria Ave. right on Valentine Road, left on Sperry Ave.

No Officer, Director or Show Chair for Ventura County DFA or member of their immediate family will enter a dog owned or co-owned by them or exhibit any dog at this show.

Ventura County Dog Fanciers Association is a California Non-Profit Corporation, proud to contribute funds to the following:

American Dog Owners Association
AKC Canine Health Fund
Ventura County K-9 Search & Rescue Fund
Western University, College of Veterinary Medicine
Ventura County Fair Foundation

Animal Regulation Volunteer Auxiliary
California Federation of Dog Clubs
National Police Dog Foundation
Search and Rescue Foundation
Paws for Reading, Foster Library
Camarillo Hospice - Pet Loss Grief Support

PRIZES FOR BEST IN SHOW AND VARIETY GROUPS

The Ventura County Dog Fanciers Association will offer a Wilton Armetale serving piece for Best In Show.

SPORTING GROUP

The Ventura County Dog Fanciers Association will offer a Wilton Armetale serving piece for Group I.

HOUND GROUP

Ventura County Dog Fanciers Association will offer a Wilton Armetale serving piece for Group I.

WORKING GROUP

Tommy Dickey will offer a Wilton Armetale serving piece for Group I.

TERRIER GROUP

Jeff and Pam Seifert will offer a Wilton Armetale serving piece for Group I.

TOY GROUP

Ventura County Dog Fanciers Association will offer a Wilton Armetale serving piece for Group I.

NON-SPORTING GROUP

Carolyn Bernard will offer a Wilton Armetale serving piece for Group I.

HERDING GROUP

Ventura County Dog Fanciers Association will offer a Wilton Armetale serving piece for Group I.

BEST JUNIOR HANDLER

Rhonda Todd will offer a gift certificate.

VARIETY GROUP CHALLENGE TROPHIES

SPORTING GROUP

The Nancy Wallis Challenge Trophy

In memory of Mrs. Nancy Wallis, VCDFA life member, the Caring Concessionaires of the Winterfest and Summerfest All Breed Dog Shows offer a perpetual trophy. The original trophy was created by Dannyquest Design for first place in the Sporting Group. To be retired, the trophy must be won three times by the same owner, not necessarily with the same dog. The name of the winning dog will be suitably engraved on the trophy. Until its retirement, the Ventura County Dog Fanciers Association will retain possession of the trophy. It is the owner's responsibility to notify the Trophy Chairperson of the third win.

TOY GROUP

The Bergum Bowl Challenge Trophy

In memory of longtime member, Bill Bergum and his family, The Ventura County Dog Fanciers Association offers the Bergum Bowl for first place in the Toy Group. To be retired, the trophy must be won three times by the same owner, not necessarily with the same dog. Until its retirement, the Ventura County Dog Fanciers Association will retain the trophy.

ROSETTES

Rosettes will be offered by the Ventura County Dog Fanciers Association for Best in Show, Reserve Best in Show, and all placements in the Variety Groups.

SPECIAL MEDALLION OFFER

The Ventura County Dog Fanciers Association offers a club medallion to each dog or bitch that completes its championship or a title at this show.

BREED TROPHIES

If a breed specific trophy is offered, the trophies will be dog bowls, travel bowls, or treat jars:

SPORTING BREEDS

RETRIEVERS (GOLDEN) – Celeste Mills, Gold Karma Golden Retrievers, offers a trophy for Best of Breed, Best of Opposite Sex, Winners Dog and Winners Bitch.

SPANIELS (COCKER) – The Cocker Spaniel Club of Southern California will support Cocker Spaniels at the show - Carl and Rosalie Anderson, Carros Cockers, offer a trophy for Best of Variety - Ascob, Best of Variety - Black, and Best of Variety - Parti-Color. Ventura county Dog Fanciers Association offers rosettes for the Best of Breed, Best of Winners, Best of Opposite Sex, Select Dog, Select Bitch, Winners Dog and Winners Bitch.

ENGLISH COCKER SPANIELS - The English Cocker Spaniel Club of Southern California will support the entry of English Cocker Spaniels at this show and offer an English Cocker memorabilia for Best of Breed and Best of Opposite Sex, for Best of Winners, Winners Dog and Winners Bitch, Select Dog and Select Bitch. Ventura County Dog Fanciers Association offers rosettes for Best of Breed, Best of Winners, Best of Opposite Sex, Select Dog, Select Bitch, Winners Dog and Winners Bitch.

WEIMARANERS - The Southland Weimaraner Club will support the entry of Weimaraners at this show and offers Photo Frames for Best of Breed, Best of Opposite Sex, Winners Dog and Winners Bitch. Ventura County Dog Fanciers Association offers rosettes for Best of Breed, Best of Winners, Best of Opposite Sex, Select Dog, Select Bitch, Winners Dog and Winners Bitch.

HOUND BREEDS

AFGHAN HOUNDS – Artie Bauer offers a trophy for Best of Breed, Best of Opposite Sex, Winners Dog, and Winners Bitch.

BASSET HOUNDS - Ron and Mary Lukins offers a trophy for Best of Breed.

NORWEGIAN ELKHOUNDS – The Norwegian Elkhound Association of Southern California will consider the classes at the Ventura County Dog Fanciers Association show as its designated specialty.

NEASC OFFICERS

President: Jan Wood

Vice President: Tony Hernandez

Secretary: Joe Wood, 27968 Featherstar Ave., Santa Clarita, CA 91350

Treasurer: Leslie Trapnel

Show Chairman: Jan Wood, 27968 Featherstar Ave. Santa Clarita, CA 91350

Ventura County Dog Fanciers Association offers Rosettes for Best of Breed, Best of Winners, Best of Opposite Sex, Select Dog, Select Bitch, Winners Dog and Winners Bitch.

The Norwegiigan Elkhound Association of Southern California offers the following prizes: Best of Breed: Picnic Basket, Best Opposite: Insulated Tote Bag, Best of Winners: Insulated Tote Bag, Select Dog and Select Bitch: Book entitled "Puc, the Grey Dog of Norway" by Nina Ross. Winner Dog and Winners Bitch: Cooler Bag, Reserve Winners Dog and Reserve Winners Bitch: Cooler Bag.

Award of Merit may be given at the judge's discretion. One Award of Merit may be selected after the Best of Breed, Best Opposite Sex, Best of Winners, Select Dog and Select Bitch awards are made. All other dogs remaining in competition are eligible for an Award of Merit: Book entitled "Puc, the Grey Dog of Norway" by Nina Ross.

PUPPY SWEEPSTAKES: Judge Mr. David Powers

Sweepstakes is open to all Norwegian Elkhounds 6 to 18 months of age that are also entered in one of the regular classes at the regular entry fee and on the regular entry form. Champions of Record are not eligible. The entry fee is \$15.00 for each dog entered in Sweepstakes and is in addition to the regular class entry fee. To enter, indicate SWEEPSTAKES with the age division in the space provided for additional classes on the entry form.

Classes divided by sex: Junior 6 months and under 9 months; 9 months and under 12 months
Senior 12 months and under 15 months; 15 months and under 18 months

After 25% of the puppy sweepstakes entry fees has been retained by the club for expenses, the amount of the Sweepstakes fee in each class becomes the Sweepstakes Fund to be divided among the winners as follows: First Place...30%, Second Place...20%, Third Place...15%, Fourth Place...10%

Puppy Sweepstakes Prizes:

Best Puppy in Juniors, Best Puppy in Seniors, Best Opposite in Juniors and Best Opposite in Seniors will receive totes. First in all classes will be the moose keychain.

VETERAN SWEEPSTAKES: Judge Mr. David Powers

Divided by Sex : 7 years and under 10 years; 10 years and older

Winners from these four classes will return to the ring and the judge will award Best in Veteran Sweeps and Best Opposite Sex to Best Veteran.

Prize Money: 25% for club expenses, entry fees will be divided as follows: 20%; to Best of Veterans; 15% to Best of Opposite; 40% equally divided between the class winners.

First in all classes will be the moose keychain.

WORKINGBREEDS

ALASKAN MALAMUTES - The Southern California Alaskan Malamute Club will support the entry of Alaskan Malamutes at this show and offers Alaskan Malamute Themed Trophies for Best of Breed, Best of Opposite Sex, Best of Winners, Winners Dog and Winners Bitch. Ventura County Dog Fanciers Association offers rosettes for Best of Breed, Best of Winners, Best of Opposite Sex, Select Dog, Select Bitch, Winners Dog and Winners Bitch.

BERNESE MOUNTAIN DOGS - Carolyn Bernard offers a trophy for Best of Breed.

BOXERS – Jan and Ron Jones offers a trophy for best of breed, Winners Dog, Winners Bitch. The Boxer Club of San Fernando Valley will support the entry of Boxers at this show and offers Boxer memorabilia for Best of Breed, Best of Winners, Best Opposite Sex, Winners Dog, Winners Bitch and High Scoring Boxer in Obedience. Ventura County Dog Fanciers Association offers rosettes for Best of Breed, Best of Winners, Best of Opposite Sex, Select Dog, Select Bitch, Winners Dog and Winners Bitch.

DOBERMAN PINSCHERS - The San Fernando Valley Doberman Pinscher Club will support the entry of Doberman Pinschers at this show and offers a trophy for Best of Breed. Ventura County Dog Fanciers Association offers rosettes for Best of Breed, Best of Winners, Best of Opposite Sex, Select Dog, Select Bitch, Winners Dog and Winners Bitch.

DOGUE DE BORDEAUX - The Dogue de Bordeaux Society of America will support the entry of Dogues de Bordeaux at this show and offers Embroidered Canvas Bags donated by Scot & Kris at Sunkist Bordeaux for Best of Breed, Best Opposite Sex, Winners Dog and Winners Bitch, and Embroidered Drool Cloths donated by Scott & Kris at Sunkist Bordeaux for Best of Winners, Select Dog and Select Bitch. Ventura County Dog Fanciers Association offers rosettes for Best of Breed, Best of Winners, Best of Opposite Sex, Select Dog, Select Bitch, Winners Dog and Winners Bitch.

GREAT PYRENEES – Linda Whisenhunt offers a trophy for Best of Breed, Best of Winners, Best of Opposite Sex, Winners Dog, Winners Bitch.

PORTUGUESE WATER DOGS - Carolyn Bernard offers a trophy for Best of Breed.

SAMOYEDS – Donna Hollingsworth and Maria Bokron-Nowlin, Holly Samoyeds, offer a trophy for Best of Breed, Best of Winners, Best of Opposite Sex, Winners Dog and Winners Bitch.

STANDARD SCHNAUZERS – The Standard Schnauzer Club of Southern California will consider the classes at the Ventura County Dog Fanciers Association show as its designated specialty.

OFFICERS

President Ed Watson
Vice President Mason Campbell
Secretary Rhonda Feinberg

c/o P.O. Box 102, Agoura Hills, CA 91376-0102

Treasurer Jeanie Marvin
Directors Ron Green, Julie Henry, Judy Legan
Show Chair Arden Holst

P.O. Box 102, Agoura Hills, CA 91376-0102

CHALLENGE TROPHIES - The following Challenge Trophies are offered by the Standard Schnauzer Club of Southern California for competition only at its Specialty. For permanent possession, these trophies must be won three times by the same owner, not necessarily with the same dog, nor at consecutive shows. Trophies remain in the possession of the Standard Schnauzer Club of Southern California unless otherwise directed by the Board of Directors.

BEST OF BREED: "SETTING THE STANDARD" trophy is a cold cast bronze moving Standard Schnauzer on walnut base. Retired in 2004 by Ch. Pepper Tree Bel Air London, it was donated in 2005 by Margaret Mohn (London's Standards).

BEST OF BREED: RICHARD RENSHAW CHALLENGE TROPHY is a bronze Standard Schnauzer with puppies in a basket on a wooden base.

BEST OPPOSITE SEX TO BEST OF BREED: "BEAUTY AND BRAINS" is an original bronze Standard Schnauzer on a marble and wood base, donated in memory of Martha Carpenter, retired and re-donated by Earl and Arden Holst (Pepper Tree Standard Schnauzers).

BEST OF WINNERS: KB'S STANDARD SCHNAUZERS CHALLENGE TROPHY is a cold cast bronze Standard Schnauzer head, by Sue Stephenson on a wooden base, donated by Karen and Gordon Benson.

WINNERS DOG: STARDUST STANDARD SCHNAUZERS CHALLENGE TROPHY is a cold cast bronze sculpted head on a wooden plaque donated by Carol and Ed Karas.

WINNERS BITCH: The PEPPER TREE CHALLENGE TROPHY, "The Ribbon Box" features a bronze cast Standard Schnauzer head on a hand crafted hardwood box, donated by Earl and Arden Holst (Pepper Tree Standard Schnauzers).

Ventura County Dog Fanciers Association offers rosettes for Best of Breed, Best of Winners, Best of Opposite Sex, Select Dog, Select Bitch, Winners Dog and Winners Bitch.

In addition to the FLAT RIBBONS and ROSETTES provided by the Ventura County Dog Fanciers Association, the Standard Schnauzer Club of Southern California will provide the following trophies and rosettes.

ROSETTES: Offered for Veteran Dog, Veteran Bitch, Stud Dog, Brood Bitch, High Scoring Obedience, High Scoring Rally, and Awards of Merit.

CONFORMATION TROPHIES (OUTRIGHT AWARDS):

The Standard Schnauzer Club of Southern California offers the following trophies, unless otherwise designated:

BEST OF BREED - Large metal and enameled serving ware and utensils. By Rhonda and Joe Feinberg.

BEST OF OPPOSITE SEX- Large original metal and enameled serving ware. By Rhonda and Joe Feinberg

BEST OF WINNERS – Large metal and enameled chip and dip tray. By RainGirl Schnauzers

WINNERS DOG – Metal and enameled cake tray and server. By Rhonda and Joe Feinberg

RESERVE WINNERS DOG-Metal and enameled serving tray by Sandy Klauer

WINNERS BITCH – Metal and enameled cake tray and server by Silverado Standard Schnauzers

RESERVE WINNERS BITCH - Metal and enameled serving tray by Greenhill's Standard Schnauzers

FIRST PLACE IN THE FOLLOWING CLASSES shall receive Metal and enameled three piece nut bowl set.

PUPPY DOG, 6-9 MOS., PUPPY DOG, 9-12 MOS., DOG, 12-18 MOS., NOVICE DOG –

AMATEUR OWNER HANDLED DOG - Sandy Klauer

BRED BY EXHIBITOR DOG - Sandy Klauer

AMERICAN BRED DOG-

OPEN DOG – Pepper Tree Standard Schnauzers

VETERAN DOG - KB's Standards and George Richardson

PUPPY BITCH, 6-9 MOS., PUPPY BITCH 9-12 MOS., BITCH 12-18 MOS., NOVICE BITCH, AMATEUR HANDLED BITCH-

BRED BY EXHIBITOR BITCH - Patti Post/Penny Hamilton

AMERICAN BRED BITCH-

OPEN BITCH – Von Ervic Standards Schnauzers

VETERAN BITCH - KB's Standards and George Richardson

STUD DOG - Stardust Standard Schnauzers

BROOD BITCH -

Contributors to the General Trophy Fund: Thank you! Sandy Klauer

AWARDS OF MERIT:

"Awards of Merit" may be given at the judge's discretion. Each Award of Merit will receive a Special Rosette offered by the Standard Schnauzer Club of Southern California. The Awards of Merit will be selected after the Best of Breed, Best of Opposite Sex, Best of Winners, Select Dog and Select Bitch awards are made. All other dogs remaining in competition are eligible for an Award of Merit. The number of Awards of Merit is determined by the size of the entry in competition for Best of Breed. One Award of Merit may be given for every 10 dogs competing for Best of Breed.

PUPPY SWEEPSTAKES:

Judge: Wood Wornall

Conditions and Requirements: No prior nominations of dogs that are entered in a sweepstakes are permitted. Open to Standard Schnauzers, except Champions of Record, who are 6 months of age and not over 18 months of age on the day of the show. All entries in Sweepstakes must also be entered in a regular class at the Standard Schnauzer Club of Southern California Specialty. The entry fee is \$20.00 for each dog entered in Sweepstakes and is in addition to the Regular Class entry fee. To enter, indicate "SWEEPSTAKES" with the age division in the space provided for "Additional Classes" on the entry form. Champions No dog that has completed the requirements for a Champion of Record prior to the date of judging shall compete in the Sweepstakes. For the purpose of these rules the date of record for the Champion of Record shall be the date of the show at which the dog won its final points.

Handlers No dog may be handled in a Sweepstakes class by a professional handler (one who realizes monetary gain from showing dogs) or his/her paid assistant unless the handler is the registered owner of the dog.

Classes divided by sex are: Junior Puppies: 6 and under 9 months; 9 and under 12 months

Senior Puppies: 12 and under 15 months; 15 and under 18 mos.

All class winners return to the ring for final judging. From junior puppy class winners is chosen a "Best Junior Puppy in Sweepstakes" From senior puppy class winners is chosen a "Best Senior Puppy in Sweepstakes". From the Best Junior and Best Senior is chosen "Best in Sweepstakes".

THERE IS NO BEST OPPOSITE SEX IN PUPPY SWEEPSTAKES.

Prize Money: After deducting 25% for club expenses, entry fees will be divided as follows: 20% to Best in Sweepstakes; 10% each Best Junior Puppy and Best Senior Puppy; 35% equally divided between the Class winners.

PUPPY SWEEPSTAKES TROPHIES:

The SSCSC offers the following trophies unless otherwise designated. Rosettes will be offered for Best in Sweepstakes, Best Jr. Puppy and Best Senior Puppy.

BEST IN SWEEPSTAKES- Metal and enameled serving tray. By RainGirl Schnauzers
BEST SENIOR PUPPY & BEST JUNIOR PUPPY – Metal and enameled serving utensils.

VETERAN SWEEPSTAKES:

Judge: Wood Wornall

Conditions and Requirements: Open to Standard Schnauzer Champions of Record that are 7 years of age or older on the day of the show. Dogs shown in Veteran Sweepstakes need not be entered in one of the regular classes and may be spayed or neutered. The entry fee is \$20.00 for each dog entered. To enter, indicate " VETERAN SWEEPSTAKES" with the age division in the space provided for "Additional Class" on the entry form.

Classes divided by sex are: Veteran: 7 years and under 10 years; Veteran: 10 years and older. Winners from these four classes will return to the ring and the judge will award Best Veteran in Sweepstakes and Best Opposite Sex to Best Veteran in Sweepstakes.

Prize Money: After deducting 25% for club expenses, entry fees will be divided as follows: 20% to Best Veteran in Sweepstakes; 15% to Best Opp. Sex; 40% equally divided between the class winners.

VETERAN SWEEPSTAKES TROPHIES:

The SSCSC offers the following trophies unless otherwise designated. Rosettes will be offered for Best in Veteran Sweepstakes and Best Opposite Sex.

BEST VETERAN IN SWEEPSTAKES- Metal and enameled serving tray. Donated by Beryl O'Harra
BEST OPPOSITE SEX – Metal and enameled serving tray

High Scoring Standard Schnauzer: Metal and enameled three piece nut bowl set donated by Beverly Wein

High Scoring Standard Schnauzer Rally: Metal and enameled three piece nut bowl set if a tie, faster dog wins. Donated by Mark and Jeanie Marvin

TERRIER BREEDS

NORWICH TERRIER - Jeff and Pam Seifert offer a trophy for Best of Breed, Best Opposite Sex.

TOY BREEDS

CHINESE CRESTED The Chinese Crested Club of Greater Los Angeles will Support the entry of the of Chinese Crested at this show and offers a Chinese Crested theme T-Shirt for the Best of Breed, a Chinese Crested theme Tote Bag for the Best of Opposite Sex and a limited edition Chinese Crested print for Best of Winners. Ventura County Dog Fanciers Association offers rosettes for Best of Breed, Best of Opposite Sex, Best of Winners, Winners Dog, Winners Bitch, Select Dog and Select Bitch.

PAPILLONS - The Papillon Club of America, Southwest Regional Committee offers a kennel bed for Best of Breed and High Scoring Papillon In Trial, a plush bed for Best of Winners and Best of Opposite Sex, a crate pad for Winners Dog, Winners Bitch, Select Dog, and Select Bitch. Ventura County Dog Fanciers Association offers rosettes for Best of Breed, Best of Winners, Best of Opposite Sex, Select Dog, Select Bitch, Winners Dog and Winners Bitch.

POODLES (TOY) – The Poodle Club of Southern California supports the entry of Poodles at this show. Carolyn Bernard offers a trophy for Best of Breed, Best of Winners, Best of Opposite Sex, Winners Dog and Winners Bitch. Ventura County Dog Fanciers Association offers rosettes for Best of Breed, Best of Winners, Best of Opposite Sex, Select Dog, Select Bitch, Winners Dog and Winners Bitch.

TOY FOX TERRIERS – Laura Laschi offers a trophy for Best of Breed, Best of Winners, Best of Opposite

Sex, Winners Dog, Winners Bitch.

NON-SPORTING BREEDS

BOSTON TERRIER – Susan Mc Coy, Westgate Toy Fox Terriers, offers a trophy for Best of Breed.

BULLDOGS – The Bulldog Club of America, Division III will support the entry of Bulldogs at this show. .
Ventura County Dog Fanciers Association offers rosettes for Best of Breed, Best of Winners, Best of Opposite Sex, Select Dog, Select Bitch, Winners Dog and Winners Bitch.

CHINESE SHAR PEI - Golden State Chinese Shar Pei Club will support the entry of Chinese Shar Pei at this show. Ventura County Dog Fanciers Association offers rosettes for Best of Breed, Best of Winners, Best of Opposite Sex, Select Dog, Select Bitch, Winners Dog, and Winners Bitch.

POODLES (STANDARD, MINIATURE) – The Poodle Club of Southern California will support the entry of Poodles at this show. Carolyn Bernard offers a trophy for Best of Breed, Best of Winners, Best of Opposite Sex, Winners Dog and Winners Bitch. Ventura County Dog Fanciers Association offers rosettes for Best of Breed, Best of Winners, Best of Opposite Sex, Select Dog, Select Bitch, Winners Dog and Winners Bitch.

HERDING BREEDS

AUSTRALIAN SHEPHERDS – Gina Gables offers a trophy for Best of Breed.

BEARDED COLLIES - The Bearded Collie Club of Southern California will support the entry of Bearded Collies at this show and offers a Hand Painted Dog Platter for Best of Breed and Best of Winners, a Hand Painted Dog Plate for Best of Opposite Sex and a Dog leash for Winners Dog and Winners Bitch.
Ventura County Dog Fanciers Association offers rosettes for Best of Breed, Best of Winners, Best of Opposite Sex, Select Dog, Select Bitch, Winners Dog and Winners Bitch.

BELGIAN MALINOIS - Peri Norman offers a trophy for Best of Breed, Best of Opposite Sex.

BELGIUM SHEEPDOGS - Peri Norman offers a trophy for Best of Breed, Best of Opposite Sex.

BELGIAN Tervurens - Peri Norman offers a trophy for Best of Breed, Best of Opposite Sex.

BORDER COLLIES - The Border Collie Club of Greater Los Angeles will support the entry of Border Collies at this show and offers Border Collie related items for Best of Breed, Best of Opposite Sex, Best of Winners, Winners Dog and Winners Bitch. Ventura County Dog Fanciers Association offers rosettes for Best of Breed, Best of Winners, Best of Opposite Sex, Select Dog, Select Bitch, Winners Dog and Winners Bitch.

PEMBROKE WELSH CORGIS – Carolyn Thornton offers a trophy for Best of Breed.

POLISH LOWLAND SHEEPDOGS - Carolyn Bernard offers a trophy for Best of Breed and Best of Opposite Sex.

JUNIOR SHOWMANSHIP PRIZES

Rhonda Todd offers a trophy for 1st Place in each class.

The Store4Dogs offers a \$10 gift card for TheStore4Dogs to first in each class

OBEDIENCE

Qualifying scores required, unless specifically noted.

Ventura County Dog Fanciers Association offers a dark green ribbon to each dog making a qualifying score in this trial.

Ventura County Dog Fanciers Association offers a medallion for each dog finishing an obedience title.

Highest Scoring Local Dog - (Owner and handler must be residents of Ventura County) - Ventura County Dog Fanciers Association offers a trophy.

HIGH IN TRIAL - The Ventura County Dog Fanciers Association offers a trophy.

HIGH COMBINED - The Ventura County Dog Fanciers Association offers a trophy.

HIGH SCORING NON-SPORTING DOG – Leslie Selfridge offers a crystal bowl.

HIGH Scoring Australian Shepherd – Beverly Halpin offers a trophy.

High Scoring Golden Retriever - Beverly Halpin offers a trophy

High Scoring Labrador Retriever - Beverly Halpin offers a trophy.

High Scoring Samoyed - Donna Hollingsworth and Maria Bokron-Nowlin, Holly Samoyeds, offers a trophy.

RALLY

Qualifying scores are required for all prizes. All dogs with qualifying scores will be awarded a dark green ribbon. The Ventura County Dog Fanciers Association offers a medallion for each dog finishing a rally title.

Beverly Halpin offers a trophy for 1st place in each class.

Sunday
Ventura Dog Fanciers Association



Best in Show

-Three (3) large bags of any Pro Plan dog food

Group First Winners (7)

-One (1) large bag of any Pro Plan dog food

High in Trial

-Garment Bag offered by Pro Plan

Best Junior Handler

-Garment Bag offered by Pro Plan

Best of Breed Winner

-Product and/or gift valued at more than \$5.00 from Pro Plan

ALL AWARDS, IF NOT PRESENTED IN THE RING, MUST BE PICKED UP DURING THE EVENT AT THE PURINA BOOTH. PRESENTATION OF THE WINNING RIBBON IS REQUIRED. PURINA RESERVES THE RIGHT TO MAKE AWARD SUBSTITUTIONS OF EQUAL OR GREATER VALUE IF LISTED AWARD IS NOT AVAILABLE. **

CLASSIFICATION

This classification applies to each breed, whose name is listed. Any change in regular or non-regular classes appears under the individual breed heading.

REGULAR CLASSES

Puppy Dogs	Puppy Bitches
6 mos. and under 9 mos.	6 mos. and under 9 mos.
Puppy Dogs	Puppy Bitches
9 mos. and under 12 mos.	9 mos. and under 12 mos.
12 mos. and under 18 mos. Dogs	12 mos. and under 18 mos. Bitches
Novice Dogs	Novice Bitches
Amateur Owner Handler Dogs	Amateur Owner Handler Bitches
Bred by Exhibitor Dogs	Bred by Exhibitor Bitches
American Bred Dogs	American Bred Bitches
Open Dogs	Open Bitches
Winners Dog	Winners Bitch

NON-REGULAR CLASSES, INVOLVING SINGLE DOG ENTRIES

Veteran Dogs - For dogs 7 years of age and older

Veteran Bitches - For bitches 7 years of age and older

BEST OF BREED (VARIETY) COMPETITION

Best of Breed (Variety) Competition - "The following categories of dogs may be entered and shown in Best of Breed competition. Dogs that are Champions of Record. Dogs which according to their owner's records have completed the requirements for a championship but whose championships are unconfirmed. The entry and showing of dogs whose championships are unconfirmed is limited to a period of 90 days from the date of the show where a dog completed the requirements for a championship according to the owner's records. If, at the end of the 90-day period, the championship of a dog has not been confirmed by the American Kennel Club, no further entries of the dog for Best of Breed competition are to be made until its championship has been confirmed by the AKC."

NON-REGULAR CLASSES, INVOLVING SINGLE DOG ENTRIES

Stud Dog - For dogs that have sired two dogs or bitches entered in this show. The award will be based on the merits of the get. The owner of the stud dog need not be the owner of the get. As the judge's decision in this class will be based on the merits of more than one dog or bitch, no one of the dogs or bitches making up the entry judged first in the class, will be eligible to compete for Best of Breed by virtue of having won this class. The Stud Dog must appear in the ring with his get and be entered in the Stud Dog Class.

Brood Bitch - For bitches that have whelped two dogs or bitches entered in this show. The award will be based on the merits of the produce. The owner of the brood bitch need not be the owner of the produce. As the judge's decision in this class will be based on the merits of more than one dog or bitch, no one of the dogs or bitches making up the entry judged first in the class, will be eligible to compete for Best of Breed by virtue of having won this class. The Brood Bitch must appear in the ring with her produce and be entered in the Brood Bitch Class.

NON-REGULAR CLASSES, INVOLVING MULTIPLE DOG ENTRIES

Brace - For two dogs of the same breed or variety with one common owner.

JUNIOR SHOWMANSHIP CLASSIFICATION

Novice Junior	Novice Intermediate	Novice Senior
Open Junior	Open Intermediate	Open Senior
		Master

OBEDIENCE CLASSIFICATION

Beginners Novice A	Beginners Novice B	Novice Graduate
Novice A	Open A	Utility A
Novice B	Open B	Utility B

RALLY CLASSIFICATION

Rally Novice A	Rally Advanced A	Rally Excellent A
Rally Novice B	Rally Advanced B	Rally Excellent B

JUNIOR SHOWMANSHIP COMPETITION

Novice Junior Class: For Boys and Girls who are at least 9 years old and under 12 years old on the day of the show and who, at the time entries close, have not won three First Place awards with competition present in a Novice Class at a licensed or member show.

Novice Intermediate Class: For Boys and Girls who are at least 12 years old and under 15 years old on the day of the show and who, at the time entries close, have not won three First Place awards with competition present in a Novice Class at a licensed or member show.

Novice Senior Class: For Boys and Girls who are at least 15 years old and under 18 years old on the day of the show and who, at the time entries close, have not won three First Place awards with competition present in a Novice Class at a licensed or member show.

Open Junior Class: For Boys and Girls who are at least 9 years old and under 12 years old on the day of the show and who, at the time entries close, have won three First Place awards with competition present in a Novice Class at a licensed or member show.

Open Intermediate Class: For Boys and Girls who are at least 12 years old and under 15 years old on the day of the show and who, at the time entries close, have won three First Place awards with competition present in a Novice Class at a licensed or member show.

Open Senior Class: For Boys and Girls who are at least 15 years old and under 18 years old on the day of the show and who, at the time entries close, have won three First Place awards with competition present in a Novice Class at a licensed or member show.

Master Class: This class will be for boys and girls who are at least 9 years old and under 18 years on the day of the show, and who have won the 10 first place wins in an Open class with competition to be eligible to enter the Limited C lass Competition. The calendar for this class will be November1 - October3 1 of the following year. .All Juniors meeting the criteria for this class are required to enter the Master Class and may change their entry the day of the show if entries have already closed. Once the eligibility time frame for that year has passed all participants return to the Open Class to compete for the following year

Each dog handled in a Junior Showmanship Class must be entered in one of the Breed or Obedience Classes at the show, or must be entered for Junior Showmanship only. However, a dog may be substituted. Such substitution must be accompanied by an official AKC entry form. All such substitutions must be made one half-hour prior to the judging of any Junior Showmanship Classes at the show. Each dog must be owned or co-owned by the Junior Handler or by the Junior Handler's father, mother, brother, sister, uncle, aunt, grandfather or grandmother, including step and half relations or by a member of the Junior Handler's household. Every dog entered for Junior Showmanship must be eligible to compete in Dog Shows or in Obedience Trials. BITCHES IN SEASON ARE NOT ELIGIBLE. A dog that has been excused or disqualified by a Breed Judge or by a Bench Show Committee may still be handled in Junior Showmanship if eligible to compete in Obedience Trials. A dog that has been rejected, dismissed, or excused by the Veterinarian for the protection of the other dogs at the show or for the protection of the dog excused may not be handled in Junior Showmanship.

Junior Handlers who win a third Novice Class with competition present after the closing of entries for a show may transfer their entry from the Novice Class to the Open Class provided that this transfer is made by the Superintendent at least one half-hour prior to the scheduled start of any regular conformation judging or one half-hour prior to the scheduled start of Junior Showmanship judging at the show, whichever is earlier.

Winning of first place in an Open Class at this show may qualify or count toward qualification for entry in certain future limited Junior Showmanship Classes. For information on eligibility requirements for limited Junior Showmanship Classes which have been approved to date by AKC go online at www.akc.org.

Junior Handlers must include their AKC Junior Handler identification number on the entry blank.

You may obtain your number by calling the AKC Event Records Department (919) 233-9767.

Notice: Be sure all information for Junior Showmanship Classes is entered on the front and back of the entry form.

RIBBON PRIZES

The following ribbon prizes will be awarded:

First Prize - **Blue Ribbon**

Third Prize - **Yellow Ribbon**

Second Prize - **Red Ribbon**

Fourth Prize - **White Ribbon**

Winners - **Purple Ribbon**

Reserve Winners - **Purple and White Ribbon**

Best of Winners - **Blue and White Ribbon**

Best of Breed & Best of Variety - **Purple and Gold Ribbon**

Best of Opposite Sex to Best of Breed or Variety - **Red and White Ribbon**

Grand Champion Select – **Light Blue and White Ribbon**

Highest Combined Score - **Blue and Green Rosette** Highest Scoring Dog - **Blue and Gold Rosette**

Best in Show - **Red, White and Blue Rosette**

Reserve Best In Show – **Red, White and Yellow Rosette** (unless otherwise noted)

And the following ribbon prizes for all non-regular classes:

First Prize - **Rose Ribbon**

Third Prize - **Light Green Ribbon**

Second Prize - **Brown Ribbon**

Fourth Prize - **Gray Ribbon**

The Summerfest Cluster clubs will offer rosettes for Best of Breed, Best of Winners, Best of Opposite Sex, Select Dog, Select Bitch, Winners Dog and Winners Bitch to each specialty and supported entry club.

CATALOG ADVERTISING

Full Page - \$65, Half Page \$45

(Price includes one picture, additional pictures \$10.00)

Important information for exhibitors, handlers and vendors – Payment Must Accompany Order.

To Submit Copy, or for additional information, contact:

Tommy Dickey, 1406 La Paz Drive, Ojai, CA 93023 email tommy.dickey@opl.ucsb.edu

DEADLINE TO SUBMIT COPY FOR CATALOG ADVERTISING IS JUNE 9, 2013

LODGING

The following motels and hotels have agreed to accept our exhibitors and their well-behaved dogs as guests. Check with them regarding deposits and restrictions.

Tremendous effort has been made in order to gain the support of local hotels/motels to allow our exhibitors with their dogs. Please keep in mind that we would like these facilities to welcome our exhibitors and their dogs each year. We implore your cooperation in leaving these hotels/motels clean, neat and tidy. Please always be gracious to the hotel/motel staff and management. Please DO NOT bathe your dogs in the hotels/motels and please DO NOT allow your dog(s) barking to become a nuisance.

La Quinta Inn: 5818 Valentine Road, Ventura (805) 658-6200. (Check for special Summerfest rate; no extra charge for pets). Located off the 101 freeway at Victoria and Valentine. Free internet, outdoor pool & breakfast.

Ventura Beach Marriott: 2055 E. Harbor Blvd., Ventura (805) 643-6000. Take Seaward exit off 101 freeway and turn left to Harbor Blvd. Turn right on Harbor to the Marriott. \$75 non-refundable fee for pets.

4 Points By Sheraton: 1050 Schooner Dr. (off Harbor Blvd.), Ventura (805)658-1212. Five mile drive on Harbor to Seaside Park (show grounds). \$75 non-refundable fee for pets.

Holiday Inn Express: 1080 Navigator Dr. (off Harbor Blvd.), Ventura (805)856-9533. Five mile drive on Harbor to Seaside Park (show Grounds). \$75 non-refundable fee for pets.

Crowne Plaza Ventura Beach: 450 Harbor Blvd., Ventura (648-2100). A 10 minute walk to Seaside Park (Show Grounds). Located on the beach. \$75 non-refundable fee for pets.

Residence Inn By Marriott at River Ridge: 2101 W. Vineyard Ave., Oxnard (805)278-2200. Take Vineyard Ave. exit off 101 freeway (turn left) to Vineyard and Ventura Rd. (about 1 mile) \$100 non-refundable fee for pets.

Motel 6: 16141 E. Daily Dr., Camarillo (805)388-3467. Take Carmen Dr. exit off 101 freeway to Daily Dr. AKC & Motel 6 have joined to give you a 10% off deal. Log on www.motel6.com , enter access code **CP542764**. No extra charge for pets.

Motel 6: 2145 E. Harbor Blvd., Ventura (805) 649-5100. Take Seaward off 101 freeway (turn left) to Harbor (turn right) to hotel. AKC & Motel 6 have joined to give you a 10% off deal. Log on www.motel6.com , enter access code **CP542764**. No extra charge for pets.

Motel 6: 3075 Johnson Dr., Ventura (805)650-0080. Take 1st exit from 101 freeway after Santa Clara River bridge. AKC & Motel 6 have joined to give you a 10% off deal. Log on www.motel6.com, enter access code **CP542764**. No extra charge for pets.

Vagabond Inn: 756 Thompson Blvd., Ventura (805) 648-5371. Restaurant in premises and near the Show Grounds. No extra charge for pets.

Vagabond Inn: 1245 Oxnard Blvd., Oxnard (805)983-0251. Next to Denney's Restaurant and about 10 miles from the Show Grounds. \$10 fee per pet.

Mission Bell: 3237 E. Main St., Ventura (805)642-6831. Near the Pacific View Mall. Pets allowed only if reservation is for one week or more.

The Shores: 1059 Seaward Ave., Ventura (643-9600). Located at Seaward & Harbor and about 2 ½ miles on Harbor to Seaside Park (Show Grounds). Carrows is 1 block away. \$10 fee for pets one night/\$25 for multiple nights.

VikingMotel: 2107 Thompson Blvd., Ventura (805) 643-3273. \$50 refundable fee for pets.

Bayshore Inn: 3075 E. Main St., Ventura (805) 643-6427. Located on Main St. just past the Pacific View Mall. See www.bayshore.com for all their amenities. \$25 fee for pets.

Hotel/Motel Managers will communicate problems directly to show-giving clubs. A verified report that an exhibitor has abused property or caused a disturbance will result in an Event Committee Hearing.

**ALL BOOTH SPACE WILL BE ALLOCATED.
ONLY VENDORS WITH WRITTEN CONFIRMATION
WILL BE ALLOWED ON SHOW GROUNDS.**

For information, please contact:
Laura Thomas (818) 268-6695; email grnRam415@aol.com

THURSDAY SPECIALTY SHOWS

**CHINESE CRESTED CLUB OF GREATER LOS ANGELES
POODLE CLUB OF SOUTHERN CALIFORNIA (AM / PM)**

Show Superintendent: Jack Bradshaw Dog Shows www.jbradshaw.com

**SOUTHLAND WEIMARANER CLUB
DACHSHUND CLUB OF CALIFORNIA
SAN FERNANDO VALLEY DOBERMAN PINSCHER CLUB**

Rhonda Storm, Blue Ribbon Dog Shows, Event Secretary
9522 Derby Drive, Riverside, CA 92509 (951) 681-2487; fax (951) 681-4181
blueribbondogshows@gmail.com or www.blueribbondogshows.com

SOUTHERN CALIFORNIA ALASKAN MALAMUTE CLUB

Show Secretary: Eileen Parr (760) 946-9048

BOXER CLUB OF SAN FERNANDO VALLEY

Show Secretary: Beth Pariseau (661) 399-8799

BULLDOG CLUB OF AMERICA, DIVISION III

Show Secretary: Richard Seeno, Picalo SW and Event Services (925) 672-2076

BORDER COLLIE CLUB OF GREATER LOS ANGELES

Show Secretary: Jan McAninch, (714) 846-5134

GOLDEN STATE CHINESE SHAR PEI CLUB

Show Secretary: Stephanie Weise (909) 982-6472

**PAPILLON CLUB OF AMERICA - SOUTHWEST REGIONAL
ENGLISH COCKER SPANIEL CLUB OF SOUTHERN CALIFORNIA**

Show Secretary: Lea Plaut (760) 749-4100

ADDITIONAL INFORMATION FOR SPECIALTIES CAN BE FOUND ONLINE AT: www.akc.org/events

SPECIALTY COORDINATOR

Nancy A. Miller (805) 968-0447

RESERVED GROOMING

The Santa Cruz Hall is designated for RESERVED GROOMING ONLY. Free, covered, grooming space is available outdoors. All requests will be handled on a first come basis, **DEADLINE WILL BE THE CLOSE OF ENTRIES, JUNE 19, 2013.** The reserved grooming rules and the space reservation form follow.

- Spaces are all 10' X 10' with electricity for \$60.00 for all four days - the Specialty day and all days of the Cluster. No partial reservations accepted. There is no limit to the number of spaces you may reserve.
- Reserved grooming set-up will start Wednesday, July 3, 2012, after 4:00 p.m.; however, your space(s) will be reserved for you for your arrival on any day of the cluster.
- Dogs are NOT to be left in the Grooming Building overnight. The Grooming Building will be locked at 10:00 p.m. each night (except Sunday, July 7 when it will close one hour after Best in Show) and re-open each morning at 6:00 a.m.
- Drop power cords will be provided but access is not exclusive – plan accordingly and bring extension cords. **Wall outlets in the Grooming Building are NOT to be used as they cannot support anticipated power usage.** Tripped circuit breakers will NOT be re-set.
- X-pens will be allowed in the Grooming Building within your reserved space(s). All pens must have plastic sheeting or appropriate mats underneath and on all sides to at least 18" high.
- Each exhibitor is responsible for clean-up in and around their set-up. **Do not discard dirty water into the trash containers.**
- Exhibitors should have no expectation about being adjacent to an exhibitor of their choice.
- Reservations must be received at the mailing address indicated on the Reserved Grooming Request Form no later than close of entries, June 19, 2013. Monies will not be refunded and reservations cannot be changed once received.
- **Do not include Reserved Grooming Request Form and check with entries.** Your check must accompany the Reserved Grooming Request Form (no credit cards).
- When all reserved space is filled, money will be refunded by mail.
- No fax, e-mail, walk-ins or telephone reservations will be accepted.
- **RETURNED CHECKS OR INSUFFICIENT PAYMENT DOES NOT CONSTITUTE A VALID RESERVATION.** Returned or cancelled checks will be subject to a \$25.00 service fee.

RESERVED GROOMING REQUEST FORM

Name _____

Address _____

City _____ State _____ Zip _____

Phone _____ Cell _____ E-Mail _____

Number of 10' X 10' Spaces _____ X \$60.00 = **Total Amount Enclosed** _____

By submitting this form, I agree to abide to the rules of the AKC, the above rules for reserved grooming space, and the rules in the Notice to Exhibitors in the Premium List. The El Camino Real Summerfest clubs and Ventura Fairgrounds assume no responsibility for dogs or personal property left in the Grooming Building.

Signed _____

Make checks payable to Summerfest and mail with this form to:

**The Crew
P.O. Box 375
Whittier, CA 90608**

ADDITIONAL RULES

1. Entries must reach the Superintendent, Jack Bradshaw, 5434 East Olympic Boulevard, Los Angeles CA, 90022, by Noon, Wednesday, June 19, 2013 PDT. Fees should accompany entries. This club and/or its superintendent assume no responsibility for wrong or incomplete information given on the entry blank by the owner or agent of the owner. This club and its superintendents assume no responsibility for the owner or owner's agents entering a dog in a class in which the dog is not eligible to compete, or for entering the same dog twice.
2. Returned Checks do not constitute a valid entry fee. The Superintendent will add a collection fee to the amount of each returned check and declined credit card. Subsequent returned checks for the same exhibitors may result in their being put on a CASH ONLY basis. The returned check or declined credit card must be made good by cash or money order BEFORE the dog will be allowed in the ring.
3. Exhibitors' identification tickets and judging programs will be mailed to the address given on the entry blank. If not received within a reasonable time prior to the show, notify the Superintendent. Tickets returned by the Post Office marked 'undeliverable' will be held at the Superintendent's Office. Please bring your identification tickets to the show.
4. During the hours of judging, owners are to be on call and have their dogs ready to bring into the judging ring promptly in order that the judging will not be delayed. Dogs need only be present for their judging. Dogs not needed for further judging may be excused. It is the responsibility of the exhibitor to have his dog ready to be shown and at the entrance of the judging ring when the steward calls for the class. Owners of dogs or the handlers of the dogs alone are responsible for the presence of their dogs in the judging rings. This means it is not the responsibility of the ring steward, nor of any agent of the show-giving club to locate any dog, its owner or handler, when the dog's presence is needed in a judging ring. It should be understood by every exhibitor and handler that waiting for dogs to be brought into the ring is a courtesy extended to the owner or handler of the dog. There is no rule of this club nor of The American Kennel Club that requires a judge to wait for an owner or handler to bring his dog into the ring. Show hours 7 a.m. to 8 p.m.
5. Trophies and prizes will be awarded in the judging ring before the completion of the judging of the breed and the Superintendent's office advised at once, in the event of any discrepancy. All trophies must be claimed the day of the show. None will be mailed.
6. Exhibitors are admonished to make themselves familiar with the agreement of the American Kennel Club, referred to on the reverse side of the entry blanks that accompany this premium list. Rule books are available online at www.akc.org.
7. The club, its superintendents or their employees will not be responsible for the loss of or damage to any dog exhibited, whether the result of accident or other causes and in addition assumes no responsibility for any loss, damage or injury sustained by an exhibitor or handler. It is distinctly understood that every dog at this show is in the care, custody and control of its owner or handler during the entire time the dog is on the show premises.
8. No grooming tables, pens or exhibitors setups will be allowed in the aisles and all grooming must be done away from the judging ring in areas specified by the club.
9. Entry fees shall NOT be refunded in the event that a dog is absent, disqualified, sick, lame, excused by veterinarian or judge, barred from competition by action of the Event Show Committee, or because the dog is ineligible to compete due to being entered incorrectly. There is no refund of entry fee for duplicate entry. There will be a \$2.00 fee charged for cancellation of entry prior to closing of entries.
10. There is no provision offered for unentered dogs at this show.
11. Declination of Entries. The Channel City Kennel Club, Santa Maria Kennel Club and/or Ventura County Dog Fanciers Association may decline any entries for cause and may refuse to receive or may remove any dog on account of disease, viciousness or other causes, and no one shall have any claim or recourse against the club or any official thereof.
12. If, because of riots, civil disturbances or other acts beyond the control of the show giving club, it is impossible to open or complete the show, no refund of entry will be made.
13. Do not leave any dogs in closed vehicles. If it is necessary to rescue a dog from a closed vehicle on the show grounds, the clubs and the event center will not be held responsible or liable for any damage to the vehicle involved.
14. Dogs which according to their owners' records have completed the requirements for a championship after the closing of entries for the show but whose championships are unconfirmed, may be transferred from one of the regular classes to the Best of Breed or Variety Competition, provided this transfer is made by the Superintendent at least one half hour prior to the start of the earliest Conformation judging at the Show.
15. Junior Handlers who win a third Novice Class after the closing of entries for a show may transfer their entry from the Novice Class to the Open Class provided that this transfer is made by the Superintendent at least one half-hour prior to the scheduled start of the earliest conformation judging or one half-hour prior to the scheduled start of Junior Showmanship judging at the show, whichever is earlier.
16. Dogs which according to their owners' records have earned an obedience or rally title after the closing of entries for the show may be moved up to the next class, provided this transfer is made in writing and presented to the superintendent at least 30 minutes prior to the start of each trial.
17. Practicing is not allowed in rings at any time.
18. Parents and/or Guardians are responsible for the actions of their children.
19. By signing the entry form for these shows, you are agreeing that cleanup is your responsibility.
20. Exhibitors are responsible for any damage to grounds or equipment, and for cleanup of their parking space
21. Alcohol open containers are not permitted in any public area of the Showgrounds.

PARKING

Please allow adequate time to get to your ring for judging in the event of parking congestion.

DAY OF SHOW PARKING. Seaside Park will collect a fee of \$5.00 per day at the entrance. Parking is permitted only in assigned lots and is prohibited in fire lanes. No day of show parking in overnight parking areas. Valet parking will be available at the Main entrance to the Fairgrounds.

ALL HANDICAPPED PARKING is in official, painted spaces located in the paved lot in front of the walk-in Fairgrounds entrance.

UNLOADING ZONES are located behind San Miguel and Anacapa Halls and by Santa Cruz Hall. You must leave the lights on during unloading. You may have to transport your dogs and equipment as far as 100 yards from the unloading zone to your ring area.

Following unloading, cars must park in the unpaved lot on the far side of the overnight parking.

OVERNIGHT PARKING. **OVERNIGHT PARKING WILL BE LIMITED TO THE FIRST 300 SPACE**

RESERVATIONS. Those wishing to park together should send reservations in the same envelope. All spaces are 22 feet wide and 40 feet long. Any RVs over 40 feet long must purchase two spaces. All tag vehicles will be charged \$5.00 per day. Discharge of grey water or sanitary waste anywhere on the Fairgrounds is strictly prohibited. All RVs must have a working fire extinguisher.

Dogs are not allowed outside overnight. All generators must be off between 10:00 pm and 6:00 am.

Grounds are NOT available for set-ups on Wednesday

EXCEPT for Specialty Exhibitors for the Thursday Specialty Shows listed above, Obedience Exhibitors, and Vendors, who may begin set-up after 3:00 p.m. on Wednesday.

GATE 1 will be open Wednesday at 3:00 pm and close at 11:00 pm. Gate 1 will open at 6:00 am Thursday and will close at 11:00 pm. Friday and Saturday it will be open from 6:00 a.m. to 8:00 a.m. and will re-open one hour after Best in Show until 10:00 p.m. There will be no RV parking on Sunday.

RESERVED OVERNIGHT PARKING. All fees and parking information must be received by June 19, 2013.

Reserved Fees are:

Wednesday through Saturday Nights (Four Nights)..... \$180.00

Thursday through Saturday Nights (Three Nights)..... \$135.00

Wednesday (Specialty Day Only)..... \$45.00

UNRESERVED OVERNIGHT PARKING. If available, unreserved parking will be on a first come and cash only basis. Parking will be in the large lot by the front gate. All fees will be collected at the gate. Unreserved Fees are:

Wednesday through Saturday Nights (Four Nights)..... \$220.00

Thursday through Saturday Nights (Three Nights)..... \$165.00

ELECTRICAL HOOKUPS. RV electrical hookups will be available in overnight parking areas only. Electrical hookups to the buildings will not be allowed.

The cost for a 30 AMP RV connection is \$50.00 per day with a minimum of 3 days, Friday through Sunday. Electrical power for a fourth day, Thursday, is available for an additional \$50. Electrical power will be available beginning at 5:00 p.m. on Thursday (Wednesday, for those reserving for 4 days) and ending at 6:00 p.m. on Sunday. Requests for power at the show site, without advance reservation, are subject to availability, and will cost \$10.00 more per night. A limited number of 50 AMP hook-ups will be available at \$90.00 per night, 3 night minimum, paid in advance.

Payment for advance reservation of electrical power should be made by check payable to Event Power Solutions, and mailed to: The Crew, PO Box 375, Whittier, CA 90608 (562) 789-9800.

NOTE: overnight parking will be limited to 300 reservations. Assignments to parking lots will be made in the order that reservations are received, and no electrical power refunds will be made. If you arrive before 5:00 p.m. on check-in day and plug to power, you will be charged for an extra day of power usage, per Event Power Solutions.

Any damage to Event Power Solutions' equipment will be the responsibility of the person causing the damage, and any and all damages must be paid at the time of the occurrence.

There will be no RV parking specifically designated for handicapped.

PARKING RESERVATION FORM

- For Parking and For Electrical Power, make separate checks for each.

For Overnight Parking make check payable to El Camino Real.

For Electrical Power make checks payable to Event Power Solution.

Mail with full payment to: The Crew, P.O. Box 375, Whittier, CA 90608 (562) 789-9800. There will be a \$25 service charge for all returned checks and your account must be settled in cash before parking will be allowed.

- Deadline for reservations or cancellations is June 19, 2013. Limited to first 300 spaces.

- Any mail postmarked after June 19, 2013 will be returned.

- Parking Lot A will be next to the San Miguel building. Parking Lot B will be by the front gate.

Parking personnel will assist you in locating your space and answering questions you may have. THEY WILL NOT REASSIGN SPACES. Parking is a privilege extended by the Summerfest Cluster and the clubs reserve the right to withdraw this privilege from any person who feels he/she cannot abide by the rules and instructions of the parking crew, or who resorts to abusive language and/or other tactics. There will be no refund of fees.

- If it is necessary to have my vehicle towed away, I agree that towing charges will be at my expense.

NAME: _____

ADDRESS: _____

PHONE: _____

TYPE/SIZE OF VEHICLE (including Tow Vehicle & slide out size): _____

Amount Enclosed \$ _____ Breed: _____ # of entries: _____

Power Service: _____ 30 AMP _____ 50 AMP Amount Enclosed.\$ _____

Signature: _____ Date: _____

<p>DISCHARGE OF GREY WATER OR SANITARY WASTE ANYWHERE ON THE FAIRGROUNDS IS STRICTLY PROHIBITED. ANY DAMAGE TO ELECTRICAL EQUIPMENT WILL BE THE RESPONSIBILITY OF THE RV ELECTRICAL USER.</p>
--

ATTENTION EXHIBITORS AND HANDLERS

- Seaside Park, the Channel City Kennel Club, Inc., the Santa Maria Kennel Club, the Ventura County Dog Fanciers Association and their members assume no responsibility for loss, damage or injury to any person, animal or property during activities connected with events of this Cluster Show. Exhibitors and handlers are encouraged to secure their valuables at all times.
- **THIS IS A SELF-CLEANING EVENT** and clean-up equipment is provided. Any exhibitor observed failing to clean up may be subject to disciplinary action.
- Two wheeled scooters, motorized or other, are not allowed on the Fairgrounds. **FOR YOUR SAFETY, NO STROLLERS WILL BE ALLOWED IN THE JUDGING BUILDINGS. NO TWO WHEEL VEHICLES, ROLLER BLADES, ROLLER SHOES (WHEELIES), SKATE BOARDS WILL BE ALLOWED.** Note: Two wheel vehicles do not qualify as a disabled person's vehicle.
- Quiet time is to be maintained between 10:00 p.m. and 6:00 a.m. No generators or barking dogs are permitted during those hours.

SETUPS AND GROOMING

- **OUTDOOR SETUPS** are permitted only beyond 10 feet of all show rings and where they do not cause congestion or block access to the rings. Safety regulations and limited space prohibit setups in day-of-show parking lots.
- **INSIDE ANACAPA AND SAN MIGUEL HALLS** (judging buildings) all setups must be within areas bounded by walls and the taped line. Exercise pens are not allowed in the exhibition buildings. **BLOW DRYERS OR VACUUMS** are **NOT ALLOWED** to be used in these buildings. Dogs must be removed after showing, and dogs must not be left overnight. **ROPING OFF OR SAVING SPACE IN THE EXHIBITION BUILDINGS IS STRICTLY PROHIBITED.**
- **RESERVED GROOMING AREAS** are provided in Santa Cruz Hall where power is adequate for blowers. This building is designated solely for grooming and setups. It is not available for other functions such as group lunches, raffles and club meetings.
- **UNRESERVED GROOMING AREAS:** All unreserved grooming and crating is provided on a first come, first served basis. An outdoor grooming tent will be provided. **ROPING OFF OR SAVING UNUSED SPACE IN THE UNRESERVED GROOMING AREA AND/OR BUILDINGS BY ANY MEANS IS STRICTLY PROHIBITED.** Each exhibitor is responsible for clean-up in and around their set-up.
- The Cluster Committee reserves the right to require the stacking of crates and any other remedies it may deem necessary for space in non-reserved areas on a case-by-case basis at their discretion. We encourage exhibitors to efficiently use their space to allow everyone the opportunity to have space.
- A **DOG BATHING AREA** is provided by the El Camino Real Summerfest Cluster and is located outside (Southwest side) Santa Cruz Hall. Tubs are provided and must not be moved from this area due to runoff. Please use water shut-offs after bathing your dog. **NO BATHING OF DOGS WILL BE ALLOWED IN ANY OTHER AREA. EXHIBITORS FOUND BATHING THEIR DOGS IN OTHER AREAS WILL BE SUBJECT TO A EVENT SHOW COMMITTEE.**

FAILURE TO COMPLY IMMEDIATELY WITH ANY DIRECTION OF THE EVENT COMMITTEE OR ITS DESIGNEES MAY RESULT IN AN EVENT COMMITTEE HEARING AND REVOCATION OF AN INDIVIDUAL'S RIGHT TO REMAIN ON THE GROUNDS AND REMOVAL OF EQUIPMENT MAY RESULT.

NO DOGS MAY BE LEFT IN BUILDINGS OVERNIGHT!

THE SANTA CRUZ BUILDING (grooming building) WILL BE LOCKED AT 10 PM. THE ANACAPA AND SAN MIGUEL BUILDINGS WILL BE LOCKED ONE HOUR AFTER BEST IN SHOW

SEMEN FREEZING

By C.L.O.N.E. West and Dana Bleifer, DVM

Semen Freezing – BAER Testing – Microchipping
At the Showgrounds!

Call (818) 710-8528 for an appointment.

Please bring a copy of your Registration and DNA Papers.

All BAER Testing must be paid in advance. No Refunds.

Warner Center Pet Clinic
20930 Victory Boulevard
Woodland Hills, CA 91367
(818) 710-8528

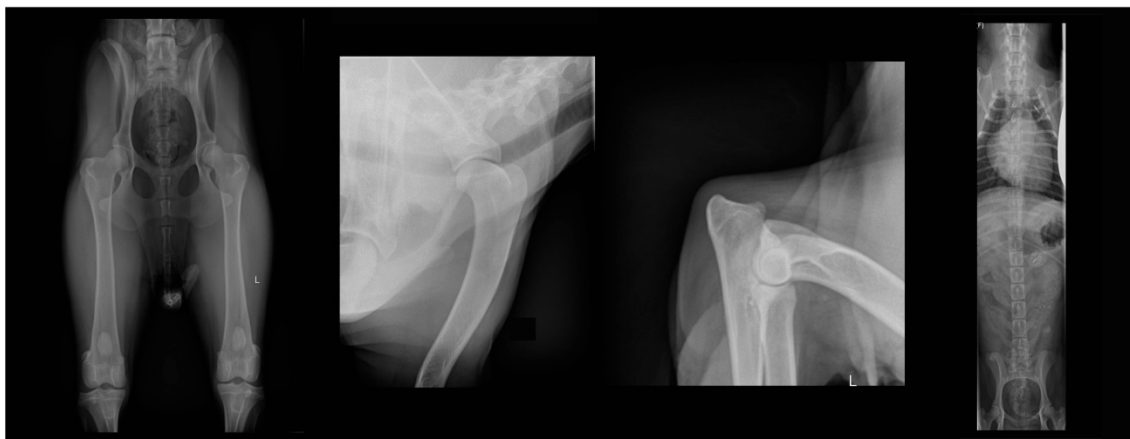
Rose City Veterinary Hospital
2695 E. Foothill Boulevard
Pasadena, CA 91107
(626) 796-8387



ON SITE AT DOG SHOWS
DEVOTED TO THE NEEDS
OF THE DOG BREEDER
AND HANDLER

BREEDER'S VETERINARY SERVICES

DIGITAL X-RAYS WITHOUT SEDATION AVAILABLE ON SHOWGROUNDS



BREEDER'S VETERINARY SERVICES AND DR. RANDALL POPKIN,

would like to introduce dog breeder's, handlers, and exhibitors to some exciting new opportunities available at dog show venues.

We cater exclusively to show dogs. Complete nearly all health clearances required on any breed in less than 15 minutes while you wait using no sedation.

SERVICES INCLUDE:

- OFA HIPS
- OFA CARDIAC
- OFA SPINE
- PENNHIP
- OFA ELBOWS
- OFA PATELLAS
- OFA TRACHEA
- HEALTH CLEARANCES
- OFA SHOULDERS
- OFA THYROID
- OFA DENTAL
- REPRODUCTIVE CONSULTATIONS

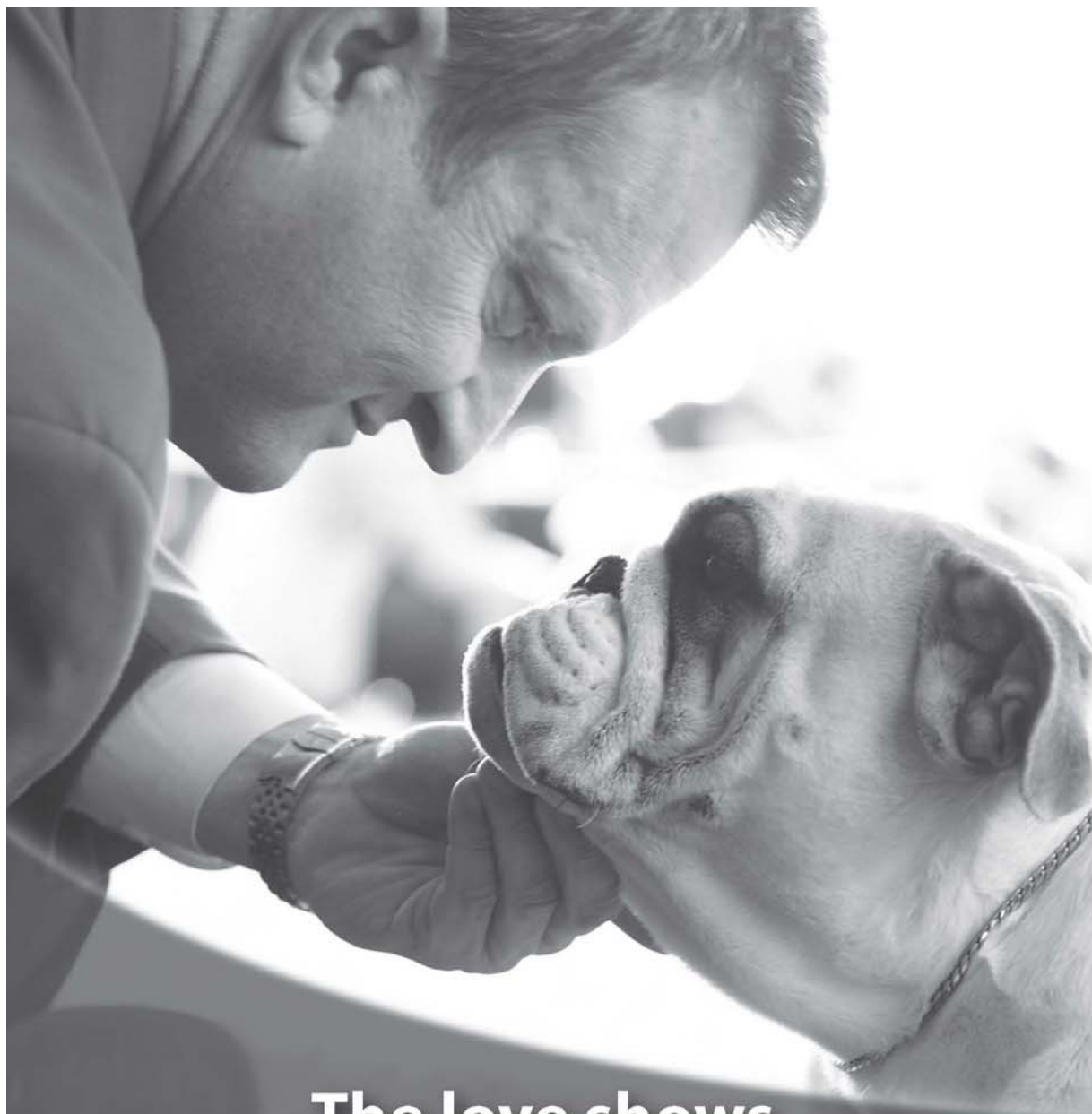
WWW.SHOWDOGMED.COM

By appointment

Please call as early as possible to reserve time

707.495.6424

E-mail completed forms downloadable from our website



The love shows.

Because of the strong connection you have with your dogs, you consistently look for ways to provide them with long healthy lives. You can help support breed-specific health studies, educational outreach and rescue efforts. Make a difference for your breed by joining Purina® Pro Club® and participating in the Purina® Parent Club Partnership Program.

Join today. Call 877-776-2582, 7 a.m. to 5 p.m. CT, Mon.-Fri. Or, visit purinaproclub.com



PURINA® PARENT CLUB
PARTNERSHIP PROGRAM

Trademarks owned by Société des Produits Nestlé S.A., Vevey, Switzerland

OFFICIAL AMERICAN KENNEL CLUB ENTRY FORM

ALL BREED DOG SHOWS, OBEDIENCE TRIALS AND RALLY TRIALS of the

- ☐ **Friday, July 5, 2013 Channel City Kennel Club**
☐ **Saturday, July 6, 2013 Santa Maria Kennel Club**
☐ **Sunday, July 7, 2013 Ventura Dog Fanciers Assoc.**

Seaside Park, Ventura County Fairgrounds, Harbor Boulevard and Figueroa Street, Ventura, California

If the classes are not the same, please write out separate entry blanks. MAIL ENTRIES WITH FEES TO: JACK BRADSHAW, Supt., P.O. Box 227303, Los Angeles, CA 90022. MAKE ALL ENTRY FEE CHECKS payable to JACK BRADSHAW. FAX (323) 727-2949 e-Mail Entries www.jbradshaw.com

ENTRIES must be received by the Superintendent not later than **NOON, WED, JUNE 19, 2013 PDT**

FIRST ENTRY of a dog at each show **\$32.00**, Each additional entry of the same dog **\$20.00**

Puppy Class (6-9) (9-12), Bred by Exhibitor, **\$20.00**, Junior Show **\$15.00**

Std Schnauzer Swp/Vet Swp (Sun) **\$20.00**

Papillon Swp (Sat) or Bulldog Swp (Sat) or Nor Elk Swp/Vt Swp (Sun) **\$15.00**

Cocker Spaniel Swp (Fri) **\$10.00** Weimaraner Maturity/Futurity (Fri) **\$30.00**

Entry must be signed at the bottom by the owner or owner's duly authorized agent, otherwise entry cannot be accepted. I enclose \$ _____ for entry fees.

BREED		VARIETY 1		SEX
DOG 2 3 SHOW CLASS		CLASS 3 DIVISION Weight, color, etc.		
ADDITIONAL CLASSES	OBEDIENCE CLASS (Jump Height)	RALLY CLASS (Jump Height)	JR. SHOWMANSHIP CLASS	
NAME OF (See Back) JUNIOR HANDLER (if any)				JR. HANDLER NUMBER
FULL NAME OF DOG				
<input type="checkbox"/> AKC® NO. <input type="checkbox"/> PAL NO. <input type="checkbox"/> FOREIGN REG NO & COUNTRY		Enter number here DATE OF BIRTH PLACE OF BIRTH (list country) Do not print the above in the catalog.		
BREEDER				
SIRE				
DAM				
ACTUAL OWNER(S) _____ 4 (Please Print) OWNER'S ADDRESS _____ CITY _____ STATE _____ ZIP _____				

NAME OF OWNER'S AGENT
(IF ANY) AT THE SHOW _____

I CERTIFY that I am the actual owner of the dog, or that I am the duly authorized agent of the actual owner whose name I have entered above. In consideration of the acceptance of this entry, I (we) agree to abide by the rules and regulations of The American Kennel Club in effect at the time of this event, and by any additional rules and regulations appearing in the premium list for this event, and further agree to be bound by the "Agreement" printed on the reverse side of this entry form. I (we) certify and represent that the dog entered is not a hazard to persons or other dogs. This entry is submitted for acceptance on the foregoing representation and Agreement. I (we) agree to conduct myself (ourselves) in accordance with all such Rules and Regulations (including all provisions applying to discipline) and to abide by any decisions made in accord with them.

☒ SIGNATURE of owner or his agent
duly authorized to make this entry _____

Daytime Phone _____ E-Mail Address _____

AGREEMENT

I (we) agree that the club holding this event has the right to refuse this entry for cause which the club shall deem sufficient. In consideration of the acceptance of this entry and of the holding of this event and of the opportunity to have the dog judged and to win prizes, ribbons, or trophies, I (we) agree to hold the AKC, the event-giving club, their members, directors, governors, officers, agents, superintendents or event secretary and the owner and/or lessor of the premises and any provider of services that are necessary to hold this event and any employees or volunteers of the aforementioned parties, and any AKC approved judge, judging at this event, harmless from any claim for loss or injury which may be alleged to have been caused directly or indirectly to any person or thing by the act of this dog while in or about the event premises or grounds or near any entrance thereto, and I (we) personally assume all responsibility and liability for any such claim; and I (we) further agree to hold the aforementioned parties harmless from any claim for loss, injury or damage to this dog.

Additionally, I (we) hereby assume the sole responsibility for and agree to indemnify, defend and save the aforementioned parties harmless from any and all loss and expense (including legal fees) by reason of the liability imposed by law upon any of the aforementioned parties for damage because of bodily injuries, including death at any time resulting therefrom, sustained by any person or persons, including myself (ourselves), or on account of damage to property, arising out of or in consequence of my (our) participation in this event, however such, injuries, death or property damage may be caused, and whether or not the same may have been caused or may be alleged to have been caused by the negligence of the aforementioned parties or any of their employees, agents, or any other persons. **I (WE) AGREE THAT ANY CAUSE OF ACTION, CONTROVERSY OR CLAIM ARISING OUT OF OR RELATED TO THE ENTRY, EXHIBITION OR ATTENDANCE AT THE EVENT BETWEEN THE AKC AND THE EVENT-GIVING CLUB (UNLESS OTHERWISE STATED IN ITS PREMIUM LIST) AND MYSELF (OURSELVES) OR AS TO THE CONSTRUCTION, INTERPRETATION AND EFFECT OF THIS AGREEMENT SHALL BE SETTLED BY ARBITRATION PURSUANT TO THE APPLICABLE RULES OF THE AMERICAN ARBITRATION ASSOCIATION. HOWEVER, PRIOR TO ARBITRATION ALL APPLICABLE AKC BYLAWS, RULES, REGULATIONS AND PROCEDURES MUST FIRST BE FOLLOWED AS SET FORTH IN THE AKC CHARTER AND BYLAWS, RULES, REGULATIONS, PUBLISHED POLICIES AND GUIDELINES.**

INSTRUCTIONS

1. (Variety) if you are entering a dog of breed in which there are varieties for show purposes, please designate the particular variety you are entering, i.e., Cocker Spaniel (solid color black, ASCOB, parti-color), Beagles (not exceeding 13 in., over 13 in. but not exceeding 15 in.), Dachshunds (longhaired, smooth, wirehaired), Collies (rough, smooth), Bull Terriers (colored, white), Manchester Terriers (standard, toy), Chihuahuas (smooth coat, long coat), English Toy Spaniels (King Charles and Ruby, Blenheim and Prince Charles), Poodles (toy, miniature, standard).
2. The following categories of dogs may be entered and shown in Best of Breed competition: Dogs that are Champions of Record and dogs which, according to their owners' records, have completed the requirements for a championship, but whose championships are unconfirmed. The showing of unconfirmed Champions in Best of Breed competition is limited to a period of 90 days from the date of the show where the dog completed the requirements for a championship.
3. (Event Class) Consult the classification in this premium list. If the event class in which you are entering your dog is divided, then, in addition to designating the class, specify the particular division of the class in which you are entering your dog, i.e. age division, color division, weight division.
4. A dog must be entered in the name of the person who actually owned it at the time entries for an event closed. If a registered dog has been acquired by a new owner it must be entered in the name of its new owner in any event for which entries closed after the date of acquirement, regardless of whether the new owner has received the registration certificate indicating that the dog is recorded in his name. State on entry form whether transfer application has been mailed to the AKC. (For complete rules, refer to Chapter 11, Section 3.)
5. Mixed Breed dogs entering classes for Agility, Obedience, and Rally trials should mark Breed as AKC Canine Partners Listed Dog "All-American Dog/Mixed Breed." Variety, Breeder, Sire, Dam information shall remain blank for mixed breed entrants.

If this entry is for Junior Showmanship, please give the following information:

JUNIOR SHOWMANSHIP

JR.'S DATE OF BIRTH _____

AKC JUNIOR HANDLER NUMBER

--	--	--	--	--	--	--	--	--	--	--

The above number MUST be included. Should you not have your Junior Handler number, this may be obtained from the American Kennel Club. Phone: (919) 816-3776.

By signing the entry form I (we) certify that the Junior Showman does not now, and will not at any time, act as an agent/handler for pay while continuing to compete in Junior Showmanship.

ADDRESS _____

CITY _____ STATE _____ ZIP _____

☐ If Junior Handler is not the owner of the dog identified on the face of this form, what is the relationship of the Junior Handler to the Owner?
